



February
2007

The
South
Coast
Orchid
Club
Inc.
Gazette

Patron
Sydney Monkhouse

ABN 83 245 384 076

PRESIDENT TREASURER SECRETARY

Geoff. Spear

Judy
McRedmond

Lucy Spear
Box 314
OAKLANDS PK
83814420

82933545

AT A GLANCE

THE NEXT MEETING OF THE SOUTH COAST ORCHID CLUB

8 pm on Wednesday, 7th February at St Bernadette's Church Hall at St Marys.

PROGRAMME FOR THE NIGHT - A.G.M., Presentations, Plant of the Year by popular vote.

Guest Speaker - Neil White

Subject - S.A. Water

INTRODUCTION TO ORCHIDS - 7.15 pm before the Main Meeting.

All Members welcome.

John Dunn - "Let's Get Motivated for 2007".

DAYTIME GROUP South Brighton Community Hall, Dover Square, off Broadway, South Brighton, on Thursday, 15th February 2007, at 2.00 pm.

Guest Speaker - Kevin Trevan

Subject - Zygopetalum's

SPECIES GROUP BBQ Sunday, 4th February 2007, at Irene and Ron's, at 11.30 am. Please bring salad, cake or desert and a chair. RSVP Lucy - 8381 4420

SPECIES GROUP to be held on Monday, 19th February 2007 at 8.00 pm. At South Brighton Community Hall, Dover Square, off Broadway, South Brighton.

SOUTHERN REGIONAL GROUP on Sunday, 18th February 2007, at Carrickalinga House, 17 - 19 Torrens Street, Victor Harbor.

Guest Speaker - John Gay

Subject - Cattleya and please bring along any problem plants you may have.

CYMBIDIUM APPRECIATION GROUP Tuesday, 13th February 2007 at 8.00 pm, at South Brighton Community Hall, Dover Square, off Broadway, South Brighton.

Subjects to be discussed - Virus. Bring along any plants suspect to virus - wrapped please.

2006 MONTHLY FLOWER OF THE NIGHT COMPETITION

During the evening we will project the winning Flowers of the Night slides, for members to vote on for the 'Flower of the Year'.

A medal will be given to the winner.

http://members.optusnet.com.au/vcs_filming

Check it out to see all the updates gazettes & pictures.

Have an opinion or something to say

contact the Editor Ron Parish Ph 08 8298 4118

E-mail vcs_filming@optusnet.com.au

People who submit articles to the Club for inclusion in our Gazette express opinions which are not necessarily those of the Club. No Guarantee is provided to anyone using the ideas & opinions expressed in these articles.

Items must be delivered to the Editor by the Thursday following the Committee meeting.

PUBLIC LIABILITY

Under insurance guideline all members and Committee attending any function or meeting held by the Club must now sign an attendance book by name and signature.

JUDGING ROSTER -

JUDGES ROSTER - FEBRUARY

REGISTRAR - JOHN GAY

OPEN R. Shooter, B. Bower, SCRIBE T. Reece

FIRST I. Attenborough, N. Oliver, SCRIBE W. Lodge

SECOND P. Harmer, D. Harmer, SCRIBE C. Campbell

JUDGE TO ARRIVE EARLY

I. Attenborough, r. Shooter, B. Bower

Introduction to Orchids Group

(Replaces Beginners Group), February the 6th at 7.15pm. This Group is open to any Member who would like to attend.

Subject - Getting Motivated, Orchid wise in 2007.

2007 CLUB MEETING DATES

March

7 Main Pat & Dave Harmer on
Cattleya Alliance

13 Cym Appreciation Group

15 Daytime Chapter

18 Southern Regional Group

19 Species Group

April

4 Main Don Nesbit on Oncidium Alliance

10 Cym Appreciation Group

12 Daytime Chapter

15 Southern Regional Group

16 Species Group

May

2 Main Autumn Show Judging

8 Cym Appreciation Group

10 Daytime Chapter

20 Southern Regional Group

21 Species Group

June

6 Main

12 Cym Appreciation Group

14 Daytime Chapter

17 Southern Regional Group

128 Species Group

July

4 Main

10 Cym Appreciation Group

12 Daytime Chapter

15 Southern Regional Group

17 Species Group

August

1 Main

14 Cym Appreciation Group

16 Daytime Chapter

19 Southern Regional Group Show

20 Species Group

PRESIDENT'S ANNUAL REPORT ** HAPPY NEW YEAR EVERYONE **

Congratulations to you all for a very successful 2006. Attendances at monthly meetings are growing all the time. This year 38 new members were invited to join the Club and the wonderful world of orchids.

REFLECTIONS OF 2006

FEBRUARY - A.G.M. Meeting, Plant of the Year by Popular Vote and Presentation Night.

Guest Speakers - P. & D. Harmer - Promotions through the Orchid Divisions.

MARCH - Philip Smoult - Tools of Trade

APRIL - M. & G. Hazeldine - How to Prepare Your Plants for Shows

MAY AUTUMN SHOW - Judging - Main Meeting

JUNE - Interstate Visitors - Jan & Bill Miles - Species and Cymbidiums

JULY - 41st Birthday - Noel Oliver - How to Set Your Plants on Mounts.

AUGUST - Joe Quamby - Conservation.

SEPTEMBER - Graham Morris - Cymbidiums.

OCTOBER - Graham Zerbe - Pt. Macquarie Conference.

NOVEMBER - John Harris - Milo Bali.

DECEMBER- Christmas Dinner - Species Night presented by Species Group.

February saw the Cymbidium Appreciation Group formed. This Group is proving to be very successful with our Cymbidium growers.

Bev & John Gay are the first to receive the Reg Shooter Award.

Two Workshops at our Treasurer's home.

SHOWS

AUTUMN SHOW - Centro Colonnades, WINTER SHOW - Centro Kurralta Park, SPRING

SHOW - Centro Arndale, ROYAL SHOW - O.C.S.A. invited us to show at the Royal Show.,

SAROC - Main Club and Species Group put in displays., TABLE TOP DISPLAYS and TRADING TABLES at Retirement Village, Seaford, Waverly House and Centro Hilton.

Plant House visit to Sim Orchids and Valley Orchids, Bus Trip to Bev & John Gay's and Tom Burian's.

The Club has now bought a Lap Top Computer and Projector.

DAYTIME GROUP, SPECIES GROUP, SOUTHERN REGIONAL GROUP AND CYMBIDIUM APPRECIATION GROUP have been very successful all year with between 20 - 30 members attending each group, plus attracting New Members.

Thank you to Centro Shopping Centres for the support they gave the Club with 4 venues last year and the ongoing support they are giving us.

Thank you to all the Committee for your support and hard work and thank you Members because without you we would not have this wonderful Club.

Good Growing, Geoff

SOUTHERN REGIONAL GROUP

Thirty-two members and partners attended the Christmas dinner at the Middleton Tavern. We all enjoyed the meal and a happy time was had by all. It was very nice to meet members and partners.

1.45 saw us all heading to the Meeting Room. Noel Oliver spoke on Native Orchids and broke up plants. Some members received a piece of the plant.

Thank you Noel, you are always there for us, and willing to help out at all times.

Bev and John Gay, Geraldine and Peter Flavel, Robyn and John Dunn all joined in on the celebrations.

Father Christmas arrived and gave everyone a chocolate and joined in singing 'Jingle Bells'.

2007 is going to be an exciting time for you all. Sunday, 7th January, Geoff, Ron and I are coming to Victor Harbor to set up a Judging Programme.

In the afternoon, Geoff and I will look at 3 new venues for your Shows and we will attempt to put in a Beginners Programme.

TESTING FOR VIRUS IN YOUR ORCHIDS.

A member of the virus advisory group can be contacted if you have any concerns about virus in your orchids. This will be a guide to your next step.

Our recommendation is to post a sample of your leaf in a plastic bag, to:

Peter Cross
TASAG ELIA and Pathogen Testing Service
13 St John's Avenue
NEWTOWN
TASMANIA 7008
AUSTRALIA

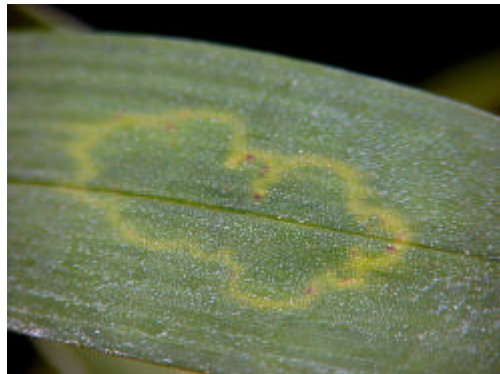
The cost per leaf test is \$16.50 - and needs to be included in the envelope. In about a week from your action, you will receive a detailed report in writing about the electron microscope test that has been conducted along with a receipt for your money.

If you feel that your orchid is worth this cost, we advise you to take this action.

Recently a leaf, belonging to a member was badly marked, suspecting that a virus was present. The good news came back that it had no virus. It was a fungus that can develop when there is not enough air movement to dry the moisture from a leaf.

Members of the virus advisory group associated with your Club include, Dave Harmer, Richard Fishlock, Graham Zerbe and Ron Parish.

Richard Fishlock for the virus advisory group.

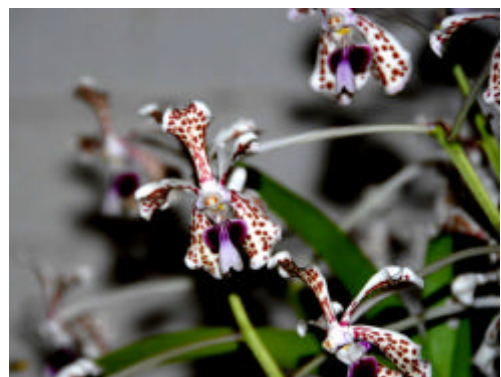


SPECIES GROUP

Due to the Xmas party the meeting was held in conjunction with the main meeting this month. 30 various species were displayed, roughly half of the total orchids on display. Members of the group gave a commentary on the plants benched.

One that created a lot of interest was *Vanda tricolor* a species from Indonesia and once was also regarded as an Australian species reportedly found in Arnhem land several years ago but this has never been confirmed.

The plant benched was 50cm tall, which is about average for this species. The flowers are produced on almost horizontal peduncles, creamy white flushed with pale purple splashes. During the day the flowers are nicely perfumed. To grow this species in South Australia a warm glasshouse gives reliable results but the owner of this plant, Ron Parish, grows it outside most of the year only bringing it under cover when flower spikes appear usually around late November. The flowers are very long lasting making it a valuable addition to a collection.



We often see species from the genus *Disa* usually the red and orange colour forms of *Disa uniflora* so it was pleasing to see an almost pure yellow form *Disa Xmas Gold*. There was

just the one flower on a small plant and, as the judge's say it was, 'sitting up & looking at you'. This terrestrial genus is native to South Africa and consists of over 100 species but apart from a handful they are small and only of botanical interest. They are best cultivated in smallish pots of fresh sphagnum moss and kept moist all year round. They thrive best if watered with rainwater and should be re-potted every year with fresh sphagnum. They are very tolerant of a wide range of temperatures from below freezing when dormant to over 40c but thrive best in cool to intermediate conditions 10 - 30c.



The genus *Encyclia* is a very large genus consisting of some 200 species from Mexico, Central & South America. Until quite recently they were included in the genus *Epidendrum*. Now it is generally regarded as those with pseudobulbs are *Encyclias* & the taller reed stem type are *Epidendrums*. There was a delightful specimen of *Encyclia mariae* on the bench. This species is only found in Mexico and is regarded as one of the loveliest of the *encyclia*'s. An attractive plant with grey green leaves on short pseudobulbs the flowers are quite large very long lasting pale lime green in colour with a pure white labellum. It is a cool grower enjoying shade house condition with plenty of air movement generous watering when growing but kept on the dry side during the cooler months. A species well worth growing.

Another orchid benched that could not be described as beautiful but rather as interesting was the New Guinea species *Dendrobium spectabile*. This is one of the many species from the section *Latouria* most of which have strange shaped flowers. Judges are taught that, among other things, an orchid flower should be zygomorphic which means that when looking at a flower it is capable of being divided into symmetrical halves in one plane only. This is certainly not the case with the flowers of *Dendrobium spectabile*. The segments are long, narrow, twisted & crimped at the edges going in all directions. The lip is long, twisted & crinkled at the edges. The sepals & petals are cream to pale green with dull mottled veins. The lip shading white to yellow veined with dark purple. All in all an interesting orchid. To grow & flower this species successfully in South Australia a heated glasshouse that can maintain a minimum of 12-15c during the winter months is required with plenty of air movement and humidity.

The Species Group meet on the 3rd Monday of each month at 8pm in the South Brighton Community Hall Dover Square, Broadway South Brighton. All members of South Coast Orchid Club will be made very welcome.
Reg Shooter.



Christmas Meeting
Dinner Catered by
Blazing Bullocks
Members voted
this occasion and
meal a great success

December Monthly Floral Competition

Ref. No. Points

Open Division

Australian native epiphyte hybrid

639 Sarco. ceciliae x P. creola Geoff & Lucy Spear (5) 3

Australian native epiphyte species

636 Cym. canaliculatum 'Gladstone' Bev & John Gay (65) 3

637 Cal. triplicata Peter & Geraldine Flavel (487) 2

638 Cym. canaliculatum 'Murray Bridge Black' Bev & John Gay (65) 1

Cymbidium species (any size)

633 Cym. Pee Wee Bev & John Gay (65) 3

634 Cym. Cricket Bev & John Gay (65) 2

635 Cym. Cricket Geoff & Lucy Spear (5) 1

Dendrobium (not Aust native) hybrid

643 Den. Pixie Princess 'H&R' Peter & Geraldine Flavel (487) 3

Dendrobium (not Aust native) species

641 Den. spectabile David & Pat Harmer (257) 3

642 Den. anceps David & Pat Harmer (257) 2

Laeliinae species

646 Epi. bractescens David & Pat Harmer (257) 3

647 Enc. cochleata Gerald Voskamp (1650) 2

Oncidiinae hybrid

658 Odont. Margareta 'Larkspur' Gerald Voskamp (1650) 3

659 Onc. Sue Hank & Erna Van Leuveren (178) 2

660 Bllra. Tahoma Glacier 'Ithan' Bev & John Gay (65) 1

Oncidiinae species

656 Onc. sphacelatum Reg & Gill Shooter (80) 3

657 Onc. sphacelatum Ron & Irene Parish (477) 2

Orchid Genera not listed elsewhere - hybrid

655 Disa [Auratkewdior x (Auratkewdior x Kevin Western (155) 3

669 Disa Jacqueline and Marc Kevin Western (155) 2

670 Disa Jacqueline and Marc Kevin Western (155) 1

Orchid Genera not listed elsewhere - species

653 Disa uniflora 'Big Red' Kevin Western (155) 3

654 Disa uniflora 'Scarlet O'Hara' Kevin Western (155) 2

Paphiopedilum Novelty

650 Paph. Gold Dollar Peter & Geraldine Flavel (487) 3

651 Paph. (primulinum x addactum) Ron & Irene Parish (477) 2

652 Paph. [(callosum x Wolterianum) x Holdenii] Gerald Voskamp (1650) 1

Paphiopedilum species

649 Paph. barbatum David & Pat Harmer (257) 3

Phalaenopsis/Dor. Novelty

668 Phal. (Golden Peaker x pulcherrima) Richard & Heather Fishlock (134) 3

Phalaenopsis/Dor. Standard

665 Phal. (name unknown) Peter & Geraldine Flavel (487) 3

666 Dtps. Queen Beer 'Red Sky' Richard & Heather Fishlock (134) 2

667 Phal. Taisuco Kaaladian Richard & Heather Fishlock (134) 1

Vandaeae Intergespecies

644 V. tricolour Ron & Irene Parish (477) 3

645 Asctm. curvifolium 'Bright Red' 4N David & Pat Harmer (257) 2

Zygopetalum hybrid (inc. intergenerics)

640 Pbt. Kiwi Glow Ron & Irene Parish (477) 3

First Division

Australian native epiphyte species

620 Cym. canaliculatum Suzanne Saunders (1481) 3

621 Cym. canaliculatum Suzanne Saunders (1481) 2

Cymbidium < 60mm (all colours)

619 Cym. Little Beauty 'Sundaani' Rito Silvestri (302) 3

Laeliinae Non Standard Other

624	C. Fire Dance 'Patricia'	Murray Baulderstone (25)	3
Laeliinae species			
622	Enc. mariae	Terri Rees (50)	3
623	Enc. citrina	Terri Rees (50)	2
648	Brassavola perrinii	Suzanne Saunders (1481)	1
Oncidiinae hybrid			
626	Onc. (isthmi x Splinter)	Suzanne Saunders (1481)	3
Oncidiinae species			
625	Onc. ampliatum 'Tara'	Suzanne Saunders (1481)	3

Second Division

Australian native epiphyte hybrid

632	Den. Virginia Jupp	Rod & Judy McRedmond (1141)	3
-----	--------------------	-----------------------------	---

Australian native epiphyte species

630	Cym. madidum	Rod & Judy McRedmond (1141)	3
631	Cym. canaliculatum	Wendy Lodge (406)	2

Laeliinae Non Standard Other

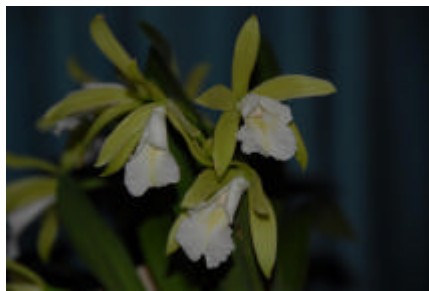
628	Enc. (bachlac x Prisma-tocarpum)	Wendy Lodge (406)	3
629	Lc. Chit Chat	Rod & Judy McRedmond (1141)	2

Oncidiinae hybrid

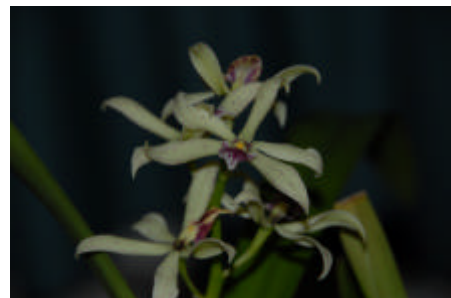
	Onc. Gower Ramsey	Wendy Lodge (406)	3
--	-------------------	-------------------	---

On the Bench at the December Meeting

Flower of Open Division and Flower of the Night: *Den.* Pixie Princess benched by Peter and Geraldine Flavel. The plant bore eleven inflorescences each carrying numerous small flowers. The narrow sepals were light green and the narrow light green petals shaded to cream at their base and these were complimented by a showy deep purple labellum. A very attractive plant.



Flower of First Division: The species *Enc. mariae* grown by Terri Rees. It carried three inflorescences each with three flowers. They were well displayed with narrow light green sepals and petals set off by a large showy white labellum which had a green stripe along the midline. The column was also white.



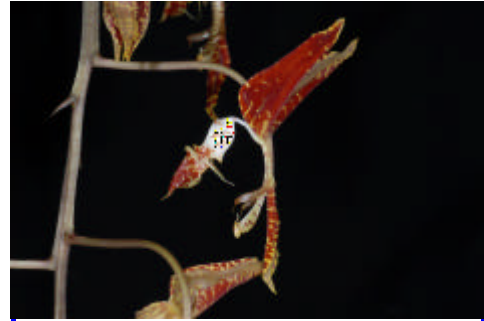
Flower of Second Division: *Enc.* (Baculac x Prisma-tocarpum) grown by Wendy Lodge. The plant bore two inflorescences carrying five and four flowers with narrow yellow sepals and petals lightly spotted with fine purple spots which became more dense towards the ends. The flowers were complimented by the flat showy purple labellum edged in white.

To add something different for the Christmas meeting, in addition to the normal monthly benching of plants there was a separate display of species plants set up. There were 31 plants across a range of genera making a very colourful and interesting display.

There were six *Cymbidium sp.* plants, five of *Cym. canaliculatum* and one of *Cym. madidum*. The colours of the flowers of the various *Cym. canaliculatum* plants ranged from green lightly spotted in pale reddish-brown to deep red. The *Cym. madidum* plant had two inflorescences of green flowers with a yellow labellum with red at it's base.

The colourful plant of *L. purpurata* var. *atropurpuratum* had flowers with white sepals and petals tinged with purple-pink and a very showy deep purple labellum. The *Brassavola perrinii* had two inflorescences with four and five flowers. Their very narrow se[als and petals were creamish-white and their large flattish labellum was white.

The plant of *Calanthe triplicata* carried four progressively flowering inflorescences, each with numerous white flowers evenly arranged around the stems. The *Gongora chocoensis* had two inflorescences with interesting showy well displayed flowers which could be described as resembling very small flying swans.



Gongora chocoensis

A plant of *Encyclia cochleata* had two progressive flowering inflorescence carrying flowers with narrow pale yellowish-green sepals and petals which reflex back down around the pedicil while the green and purple labellum points skyward. *Enc. aromatica*, another example of this genus, had two branched inflorescences carrying very small flowers with greenish-yellow sepals and petals with some light brown markings and a light brown labellum which curved up over the column.

Den. spectabile a plant from New Guinea, had very different flowers. The sepals and petals were frilled, curled and twisted with a yellow base colour edged with red and red spotting. The white to yellow labellum was marked with a 'net' of red venation and had a solid red stripe down the mid-line. The mid- lobe of the labellum was long and was also twisted and frilled. Another example of this genus, *Den. anceps*, had a different growth habit and flower form with flat leaves up the stem producing tiny single flowers on individual stems from the base of the leaves. The flowers were greenish yellow with some brownish markings.

A nicely grown plant of *Paph. barbatum* bore three flowers. Their flat white upright dorsal sepals were striped with green and maroon and the downward curving purple-red petals had darker striping and green shading along the inner upper edge. The deep purple pouch was well displayed with a small ventral sepal behind it.

Two examples of *Onc. spacelatum* had upright branched inflorescences with many bright yellow flowers which were spotted and barred with brown. An example of *Onc. ampliatum* had flowers of slightly paler yellow than the previously mentioned plant and also had minimal pale brown markings on the sepals and labellum of the flowers.

A plant of *Ascocentrum curvifolium* carried two inflorescences of nicely shaped and arranged orange flowers complimented by a paler yellow/orange labellum. A plant of *Vanda tricolor* carried four inflorescences each with a number flowers with white sepals and petals spotted in brownish purple. The showy labellum had a pale pinkish purple mid-lobe with vibrant purple on each side.

A very interesting display, thank you to those who benched their plants.

Ian Attenborough

DATES FOR YOUR DIARIES

AUTUMN SHOW - CENTRO COLONNADES

JUDGING AND MAIN MEETING - 2nd May 2007 PUT IN DISPLAY - 6th May 2007 TAKE OUT SHOW - Saturday 12th May 2007

WINTER SHOW -CENTRO ARNDALE (In front of Harris Scarfes).

JUDGING - Saturday, 21st July, T.B.A. am, Hamilton School. TAKE OUT - Saturday, 28th July at 4.30 pm. More information later.

SPRING SHOW - CENTRO ARNDALE (In front of Harris Scarfes).

JUDGING - Saturday, 22nd September, T.B.A am, at Hamilton School. TAKE OUT - Saturday 29th September, 4.30 pm. More information later.

SOUTHERN REGIONAL GROUP SHOW

Thursday, August 16th to Sunday 19th August. Venue Victor Harbor Lutheran Church Adelaide Rd Victor Harbor

JUDGING - Thursday 16th August 2007.

FACTORY TOUR of Haighs Chocolate Factory 24 April 11.30am

O.C.S.A. - T.B.A.

S.A.R.O.C. - T.B. A.

Sunday, 3rd June - ORCHID SEMINAR - Workshop - 10.00 am - 4.00 pm, BBQ lunch. Watch for more information. This will be a day to remember.

NORTHERN BUS trip - August or November - T.B. A. - MYSTERY ORCHID TRIP.

Plant visits - Rosemary and Moss Bray, Sim Orchids and Graham Morris, Valley Orchids, 1st July 2007.

SOUTHERN GROUP WORKSHOP - Reg Clifford's home, Sunday 11th March. More information later.

MEMBERS HAVE QUESTIONED

why \$2.00 is charged at Group Meetings?.

Venues need to be paid for and other expenses do occur. At the Main Meeting, because of the number of members attending, we have Lucky Square & Bark Raffles to help raise the needed funds. As members, you are all quite welcome to question our Treasurer on her monthly report.

Our daytime chapter was started many years ago and a lot of elderly people do attend who would not necessarily attend evening meetings, likewise the Victor Group would not come to the Main Meetings frequently, and the special interest groups of Species and Cymbidiums meet solely for the discussion and learning of their particular interests.

DAYTIME GROUP

Well, once again our December Christmas Meeting was a very happy and carefree one, with a good attendance and everyone getting into the holiday and Christmas spirit (not the liquid one I assure you, tea and coffee served only).

We had an excellent range of goodies on the table for afternoon tea brought in by our talented cooks which was thoroughly enjoyed by all. Thanks to everyone for making it a very special afternoon.

Our "bring a gift, receive a gift" segment went off without a hitch. Noel was keeping an eye on proceedings, making sure I didn't cause too many problems with three containers of tickets in front of me. Each one received their gift and seemed well pleased. Carols were sung; Mr Geoff Spear excelled himself once again. Father Christmas called in to visit us all. He seemed very bright and happy. I think he loves his job.

Mr Noel Oliver was our Guest Speaker, a very informative talk as usual, with slides of the latest crossing of Australian Natives. Noel always has these plants available on our Trading Table at our Shows, in small tubes, so it was great to see them as larger plants. Even as small plants, they seem to grow and flower really quickly, with a bit of TLC. So please, check them out on the Trading tables. The slides of the SAROC displays were nice to see, thank you once again Noel.

A few apologies were put in: - Mr and Mrs Biebrick, Mrs Berna Viney, Mr and Mrs Ron Parish. We all hope to see you again soon.

Our plant display was down a bit, but I'm sure everyone is busy feeding and taking care of this for the future months ahead. Terri Rees bought in a lovely soft-cane Dendrobium, a large plant with lots of lovely yellow flowers with a darker brown spot on the labellum. Well done Terri! This was voted the best plant in our popular vote segment. Thanks for bringing it in to share with us. Thanks also to the other Members who also brought in their plants.

Now, by the time this goes to print, Christmas and New Year celebrations will be over, so I do hope you all had a lovely Christmas, catching up with family and friends, and I wish you all a very Happy, Healthy and a Safe New Year.

Bye,
Dorothy.

Welcome & Congratulations to



NEW MEMBERS

Edna Gabel

LIFE MEMBERS

Irene and Ron Parish and Murray Baulderstone have been nominated for Life Membership. Please ensure you receive your ballot slips from George Abell.

Irene and Ron Parish have been in the Club since 1982 and have always been available to help where necessary. Over recent years, Ron has been a Committee Member, Vice President, Editor and has performed other duties.

Murray joined the Club in 1992 and in this time has been a great asset to the Club as a Committee Member, Secretary, President, past President and Vice President.

Your Committee recommends them to you

Current Sponsors for our Club

We wish to thank the following persons who have supported us and our shows with donations etc. Members are requested to keep these people in mind when purchasing orchids and supplies

Coast FM
David Cammack
Centro Management
Geoff & Lucy Spear
Gordon Brooks
Helmut Hermann
Jim Shaughnessy
John & Bev Gay
Moss & Rosemary Bray (Sims Orchids)
Munns Garden Centre Glandore
Murray Boulderstone
Noel Oliver

Peter Klose
Richard & Heather Fishlock
Ron & Irene Parish
Smoults Horticultural supplies
Spirit Australia Cruises
Ted & Marjorie Chance
Valley Orchids
Flagstaff Hotel

MILES HARPER

HARPER DAVISON - FOR LEGAL ADVICE
INCLUDING WILLS AND ESTATES
1st free interview for South Coast Orchid Club
Members
Phone 8271 0194
Email - miles@harperdavison.com.au

Lyttle Orchid Clones

5, Swifte Court Aberfoyle Park SA 5159
Zygopetalum seedlings in Flask
Small Flask \$20 Large Flask \$30
Phone (08) 83818618 Fax (08) 8322 7887
Email: admin@lyttleorchidclones.com.au
www.lyttleorchidclones.com.au

Valley Orchids

Lot 8 Wheaton Rd McLaren Vale
Postal Address P O Box 143 McLaren Vale
S.A. 5171 Phone 83273955
Flowering Season New releases
and seedlings
Open by appointment Ph 0419823724

Munns Garden Centre Glandore

Will give South Coast members 10% off on all
Campbells fertilizers

South Coast Orchid Club of South Australia Inc

MARKET SPOT
Orchids Australia Magazines \$6.50
Club Badges \$6.50

Tom Burian Orchids

Lot 25 Heinjus Road, Strathalbyn 5255
Phone 0412 391 989
Open Weekends all year around.

NOEL D OLIVER

Australian Native Orchids
Dendrobium & Sarcochilus
Species, Microclines, Seedlings
Also Orchid Bark (4 grades)
Available all year
Phone 0884434945 Mobile 0418854034

WESTERN ORCHIDS / LABORATORIES ORCHID TISSUE CULTURE MEDIA, LABORATORY SERVICE CLONING & SOWING

Flasks of Aust. Den. & Aust. Cym. species and hybrids.
Commercial Cym. Pot-plant, Cut-flower & Show bench
seedlings & Clones. Select quality, mini Cat. alliance
clones. Misc. species. Sarco's . Disas -
Kevin & Helen Western. Ph/Fax 08 8270 4599
Email western@arcom.com.au

AFFILIATED CLUBS
Murray Bridge and Districts Orchid Clubs
Orchid Club of South Australia



If unclaimed please return to
P.O. box 314 Oaklands Park S.A. 5046
