



*December
2001*

The South
Coast
Orchid
Club
Inc.
Gazette

PRESIDENT TREASURER SECRETARY

Murray
Baulderstone
Box 314
OAKLANDS PK
8276 3771

Graham Shevlin
CLOVELLY PK
8276 7652

Lucy Spear
Happy Valley
83814420

THE NEXT MEETING of the South Coast Orchid Club will be held at 8 pm on 11 December 2001 at St. Bernadette's Hall St. Marys.

Sausage Sizzle 6.30pm

to precede the meeting.

Advise Murray if you wish to attend.

Monster Christmas Raffle

Remember to bring a suitable item to donate to the raffle at the December Meeting and a plate of supper for after the meeting

THE SPEAKER: Stephen Monkhouse

see profile page 4 He will discuss New Development in Zygopetalums.

DAYTIME GROUP: will meet at 2.00 pm. Thursday 13 December 2001.

Lesley Gunn will talk on country orchid shows she has judged

BEGINNERS CLASSES: Before the main meeting — on Cattleyas by Geraldine Flavel

THANK YOU Barry Bailey for last months talk on cool growing orchids

Have an opinion or something to say

contact the Editor

Ron Parish

Ph 08 8298 4118

People who submit articles to the Club for inclusion in our Gazette express opinions which are not necessarily those of the Club. No Guarantee is provided to anyone using the ideas & opinions expressed in these articles.

Items must be delivered to the Editor by the second Tuesday after a Club meeting

Diary Dates for 2001

2002 Main Club meeting dates

Committee Nominations

Required at December meeting for the 2002 A.G.M.

12 February 2002—A.G.M.

12 March 2002

9 April 2002

Annual Subscriptions

can be paid at the December meeting
See last page.

14 May 2002

11 June 2002

9 July 2002

13 August 2002

10 September 2002

8 October 2002

12 November 2002

10 December 2002

NEW MEMBERS

Peg Van den Broeke & Mr. James
Welcome to the Club

SUBSCRIPTIONS FOR 2002

— SEE LAST PAGE FOR SUBSCRIPTION FORM

For at least the last 2 years we have not increased our annual subscriptions, but with rising costs, I along with the committee felt the time had come for us to raise our annual subscription, it is only a marginal increase, all single subscriptions will become \$22.00 and we have a Joint/family sub for \$28.00, A new subscription rate has been introduced \$12.00 for juniors. There are no concession fees this year.

It is regrettable we have to make this move, but we had only 2 shows this year as opposed to 3 we normally have had, This has left a shortfall in our bank book, and of course there is no guarantee we will be able to achieve 3 shows next year.

Treasurer Graham Shevlin

Cattleya Bicolor

This species was originally introduced by Mr. Loddiges in 1838 who received it from the area around the State of Minas Gerais, Brazil. It was found growing in large clumps high on tall trees along rivers. It was also found in the mountains of Rio de Janeiro at 200 ft. (60 m.) elevation, growing on rocks as well as trees. Repotting should be done only when new roots appear at the base of the lead growth. The plants bloom in September/February here in Adelaide, they like warmth, light and water when growing and then require a good rest. Here are some of the many variations of this species

C. leopoldii



Clockwise from top left

- 1 Olive green form
- 2 Var. Brasiliensis
- 3 Olive / brown form
- 4 Brown form
- 5 Var. Minasgeneraisensis

MESSAGE FROM YOUR PRESIDENT

LAST MEETING:

You the members, provided an excellent display of plants both from a spectacular and quality point of view. Congratulations to the members who were successful with these exhibits, in particular, divisional winners.

Roger Rankin visited our Club and presented Awards Certificates to John and Bev Gay, Tony De Ionnio and Mervyn and Shirley Steele for plants judged throughout the year. Our congratulations to these worthy recipients.

We are still settling in at our new venue and you will see some further changes to the benching system at future meetings. The aim is to make a more workable solution for our judges, please be tolerant and we will soon get it right.

UPDATE OF NEW DEVELOPMENTS

I had the pleasure of seeing our trainee Judges achieve their accreditation on the night of November 19th. My personal congratulations to the following members - Don and Jane Higgs, Tony Bourne and Lesley Gunn now fully accredited AOC Judges able to judge both nationally and internationally. The culmination of several years of dedication to their training and participation.

Norm Woodend and Ian Attenborough have joined the training team of the Regional Training Course and we wish them every success with their training.

Our Editors, Irene and Ron Parish will receive a Certificate early in Year 2002 for a plant awarded at the Inter-Club Day in October, 2001. Congratulations Irene and Ron.

We welcome two new members to our Club—Mr. James and Peg Van Den Broeke. The new members group was well attended and capably led by Geoff Spear. Geraldine Flavel will lead the new group in the future. This is an item that is proposed on a regular basis.

We aim to develop a new and interesting programme of Guest Speakers for Year 2002 and it seems appropriate that our organiser of Guest Speakers, Stephen Monkhouse, is the speaker for the December meeting (see CV on page 5).

As I close off for the Year 2001, I wish all members a Happy and Successful Christmas Season and a Happy New Year and look forward to showing with you in Season 2002.

Murray Baulderstone
PRESIDENT.

Get the last years Gazettes on CD Rom

If you would like to have all this years Gazettes on CD Rom please advise Ron Parish that you would like a copy. It will be available to people who have ordered before the February 2002 meeting at that meeting.

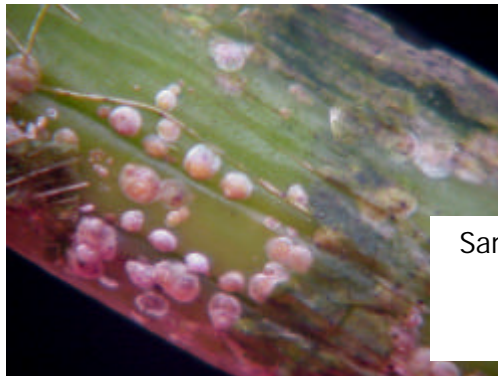
Cost is \$9.90 The Club will receive \$3.30 off each sale

The files are in Adobe .pdf format in full colour and may be printed off if desired.

This will be a feature in future with all gazettes being stored for posterity this way.

Pests Diseases & Virus

The Club is contemplating creating a CD Rom with pictures and texts on the more common afflictions to beset our orchids we aim to make it as cheaply as possible so that it can be easily obtained by all.



Sample Picture of Scale
on a
Cattleya Cane

We sadly report the passing away of Tony Proepster recently at home
Our sympathies are extended to his family

Daytime Group report

The meeting was well attended with 18 members present who viewed a slide presentation on Miscellaneous AOC Awarded Plants. The popular vote resulted in a tie for first place between Bill Clark's *Cym. lowianum* and Ruth Clark's *Sarco. Hartmannii* with *Cym. Flori Pink 'Fortune'* grown by Harry Viney in second place and *Bifranaria harrisoniae* grown by Wira Bicanin in third place.

Thanks to all who donated plants for what turned out to be a huge raffle.

At the December meeting Lesley Gunn will give a talk with slides on Country Orchid Shows. As it is the last meeting for the year please bring a plate of goodies for afternoon tea and a raffle prize of up to \$3 value and marked M, F, or unisex

Jane Higgs.

Profile Stephen Monkhouse

Born 1953, second generation orchid grower and hybridist. has been actively involved with the orchid family for some 32 years. During the last 10 years has given presentations throughout Australia and overseas. Also has been involved as a judge, exhibitor and speaker at the Asia Pacific Orchid Conference held in Fukuoka, Japan and also at the WOC in Vancouver and has been invited to speak at the WOC in Malaysia in 2002. Every year he travels the world and regularly attends shows in Japan, Malaysia, Western Europe and United States. Contributed articles to renown worldwide publications e.g. The AOS Bulletin, The Orchid Digest, The Orchid Review, Orchids Australia on Zygotetalums.

Stephens parents pioneered orchid development in Australia and introduced many people to the beauty of the Cymbidium orchid. They registered many crosses, which are still listed in the Sanders Hybrid Listing publications.

Upon their retirement in 1989, Stephen and wife Robyn continued to run the business and relocated Adelaide Orchids to its current location in picturesque Woodcroft approximately 45 minutes south of the capital city, Adelaide, in South Australia. They specialise in the development of the Zygotetalum genus. They also grow and hybridise Paphiopedilums and during the last 12 years have focused on developing the export side of the business and now produce plants for export to many different countries.

New interest groups within the Club

The Club is testing the feasibility of creating two special interest groups within its realm. They are

- 1 a species group
- 2 a southern areas group

We are looking for a registration of interest from Club members and their friends and acquaintances. If you would like to be involved in either or both these groups or want more information please contact me.

The Committee of your Club sees the formation of these groups as being particularly beneficial to the Club, with increased membership and the opportunity for far southern areas people to get to a meeting without having to travel great distances. All the Club infrastructure is already in place.

Both groups are expected to be run on similar lines as the Daytime group.

Ron Parish

Second Division:

Sarco. Fitzhart grown by Suzanne Wilcox

This was a very healthy looking plant sporting 4 inflorescences of 7 to 13 flowers. The 27mm round flowers were crystalline white with a beautiful wine red centre and delicate yellow labellum. It was growing in a 150mm squat pot in small bark mix. Suzanne commented that she grows it under shade cloth in winter and in summer it is moved under a Sultana vine.

Class	Plant Name	Grower	Pts
Aust. Nat. Epiphyte Species	<i>Sarco. hartmannii</i>	S. Wilcox	3
	<i>Den. monophyllum</i>	D. Cammack	2
	<i>Sarco. hartmannii</i>	K. Johnke	1
Aust. Nati. Epiphyte Hybrid	<i>Sarco. Fitzhart</i>	S. Wilcox	3
	<i>Sarco. Fitzhart</i>	M./ Smith	2
	<i>Sarco. Olive Nymph</i>	D. Cammack	1
Laeliinae Standard >100mm	<i>Lc. Daniela (C.intermedia x L. Jongheana)</i>	294 (?)	3
	<i>L. purpurata x C. Olivia</i>	294 (?)	2
Paphiopedilum Novelty	<i>Paph. Venus Hold</i>	S. Wilcox	3
Zygopetalum Alliance	* <i>Pptm Mathina x Z. Millie</i>	M. Smith	3

Flower of the Night and of First Division:

Lc. Adelaide Ablaze 'Meredith' Grown by John & Bev Gay

Seven (7) heads of crisp, highly coloured flowers in excellent condition Made this plant stand out from the rest. The flower colour varied from apricot at the centre to deep orange on the ends of the petals and sepals. The labellum was spade shaped and deep purple in colour. John grows this in bark under cold conditions in summer and a cold glasshouse in winter.

Class	Plant Name	Grower	Pts
Aust. Nat. Epiphyte Species	<i>Sarco. hartmannii</i>	L. Gunn	3
	<i>Sarco. hartmannii</i>	J. & B. Gay	2
Aust. Nat. Epiphyte Hybrid	<i>Sarco. (falcatus x Peri Hillii)</i>	N. Woodend	3
	<i>Sarco. Zillie 'Danny'</i>	H. & B. Viney	2
	<i>Den. Virginia Jupp</i>	J. B. Gay	1
Cymbidium > 90mm	<i>Cym. Flori Pink 'Fortune'</i>	H. & B. Viney	3
Cymbidium < 60mm	<i>Cym. Mad Magic 'Amber'</i>	S. Ng	3
	<i>Cym. Black Pearl 'Katherine'</i>	S. Ng	2
Laeliinae Standard >100mm	<i>C. Aqui – Finn 'Taida'</i>	G. & M. Voskamp	3
	* <i>C. Irene Holquin 'Brown eyes'</i>	J. & B. Gay	2
	<i>Lc. Daniella</i>	J. & B. Gay	1
Laeliinae Standard < 100mm	<i>Slc. Hazel Boyd 'Royal Scarlet'</i>	J. & B. Gay	3
Laeliinae Non Std. Cluster	<i>Lc. Adelaide Ablaze 'Meredith'</i>	J. & B. Gay	3
	<i>Blc. Adelaide Silver</i>	J. & B. Gay	2
	<i>Slc. (Hazel Boyd x Lc. Eva)</i>	R. Pankoke	1
Dendrobium (not Aust. Native)	<i>Den. Memoria Edith Wheeler</i>	R. Pankoke	3
	<i>Den. Saotome</i>	G. & M. Voskamp	2
Phalaenopsis Standard	* <i>Phal. Doral x Dtps. Fargo</i>	G. & M. Voskamp	3
Vandaceous Hybrid	<i>Ascf. Cherry Blossom</i>	G. & M. Voskamp	3
Other Orchid Hybrid Not listed	<i>Masd. Claret Chalice 'Violet Town'</i>	L. Gunn	3
	<i>Masd. Gold Purse 'Sovereign'</i>	L. Gunn	2
Other Orchid Species Not listed	<i>C. intermedia</i>	J. & B. Gay	3
	<i>Epi. Boundii</i>	H. & B. Viney	2
	<i>Bif. harrisoniae</i>	M. Cunningham	1
Seedling any Genera	<i>Cym. Black Pearl 'Katherine'</i>	S. Ng	3

Winners of the monthly floral Competition



Onc. Sydney grown by P. & G. Flavel



Lc. Adelaide Ablaze 'Meredith' grown by J. & B. Gay



Sarco. Fitzhart grown by Suzanne Wilcox

From the Registrar

Some excellent plants were benched at the November meeting and particularly when viewed from the lectern presented an eye-catching display. Congratulations to all who benched plants on the night. We seem to be settling down in our new location and we should look forward to a very good and stable year next year.

On the 19th November, a graduation dinner was held where the 9 Associate Judges graduated and became full AOC Judges. Around 40 people attended the occasion representing the Clubs whose members were graduating and the people involved in the various aspect of our training. Kel Staples, Emeritus Judge, presented the Graduates with their Certificate and Badges and spoke on some of his experiences as an AOC judge. Murray, our President and Lucy (Secretary) and Geoff Spear represented our Club. It was a pity that Rick Pankoke was unable to attend at the last minute due to ill health. I hope Rick is feeling much better now. The Club now has 4 more AOC judges in Lesely Gunn, Tony Bourne, Jane Higgs and myself.

I would also take this opportunity to mention our 2 new student Judges, Ian Attenborough and Norm Woodend who commenced training about the middle of this year. I hope they get as much enjoyment out of the course as we did. There is a lot of hard work to be done but at the same time it is very rewarding.

Open Division:

Onc. Sydney grown by Peter & Geraldine Flavel

In her commentary Lesley Gunn commented that it was quite an achievement to have all the flowers open, of even size, and in such good condition. It had one tall branched inflorescence with many flowers of basically purple brown tepals with lemon tips and a fine lemon line around the edges. The labellum was a very, very pale pink, almost white. It is grown under glass in warm conditions.

Class	Plant Name	Grower	Pts
Aust. Nat. Epiphyte Species	<i>Sarco hartmannii</i>	R. & H. Fishlock	3
Aust. Nat. Epiphyte Species	<i>Sarco</i> . Heidi <i>Sarco</i> . Melba <i>Sarco</i> . Cherie Snow	D. & J. Higgs R. & H. Fishlock M. Tiggeman	3 2 1
Aust. Nat. Terrestrial Hybrid	<i>Diuris (sulphurea x brevifolia)</i> <i>Diuris (sulphurea x brevifolia)</i>	D. Biebrick D. Biebrick	3 2
Cymbidium 60 – 90 mm	<i>Cym.</i> Queen of Hearts 'Mother Teresa'	H. Gerber	3
Cymbidium < 60mm	<i>Cym.</i> Sweet Devon '1103' <i>Cym.</i> Cricket <i>Cym.</i> Cricket 'Howzat'	H. Gerber M. Tiggeman H. Gerber	3 2 1
Laeliinae Standard >100mm	<i>C.</i> (Princess Bells x (Tia x Tiffin Bells))	R. & B. Wilson	3
Laeliinae Non Std Cluster	<i>C.</i> Claesiana 'Colourful Touch' <i>Lc.</i> Chit Chat <i>Lc.</i> Rojo	R. & I. Parish R. & I. Parish R. & I. Parish	3 2 1
Laeliinae Non Std Other	<i>Pot.</i> Kumquat Glow <i>Slc.</i> Rocket Burst 'Deep Enamel' <i>Lc.</i> Chocolate Treats	R. & I. Parish R. & I. Parish R. & H. Fishlock	3 2 1
Laeliinae Other Hybrid	<i>Smbc</i> Gee Willikers 'Henna Head' <i>Epc.</i> Burdekin Surprise 'Burgundy' <i>Ctna</i> Aquarius	R. & I. Parish D. & J. Higgs R. & I. Parish	3 2 1
Dendrobium (not Aust Native)	<i>Den.</i> Ceylon Glory 'Marion'	D. Biebrick	3
Paphiopedilum Novelty	<i>Paph.</i> Rosy Dawn	D. & J. Higgs	3
Oncidiinae	<i>Onc.</i> Sydney <i>Wils.</i> Goolwa 'Mundoo' * <i>Bllra.</i> Tahoma Glacier 'Green'	P. & G. Flavel D. Biebrick T. De Ionno	3 2 1
Vandaceous Hybrid	<i>V.</i> (Fuchs Delight 'Blue' x Wirat)	R. & I. Parish	3
Zygopetillum	<i>Z.</i> Titanic 'Monarch' <i>Z.</i> Titanic 'Monarch' <i>Z.</i> Titanic 'Hove'	P. & G. Flavel T. De Ionno H. & E. Van Leu- veran	3 2 1
Other Hybrids not listed above	<i>Prag.</i> Schroederae <i>Lyc.</i> (Candicrue x Auburn) <i>Disa.</i> (Uniflora x Wilpena)	D. & J. Higgs P. & G. Flavel G. & L. Spear	3 2 1
Other Species Not listed	<i>Gga.</i> nigropunctata <i>Gga</i> maculata	R. & I. Parish R. & I. Parish	3 2

Subscriptions for 2002 are now due and to assist the Club in maintaining its records of members **We ask you to please complete the form below and return it with your subscription.**
 The name(s) you use will be the name that you show under in any Club shows.
Please also indicate your E-mail address if you have one so that we can more efficiently distribute mail and Gazettes to you.

South Coast Orchid Club Inc Membership Renewal

I/We wish to renew Membership of the Club

Fees	
Joint membership	\$28.00
Single Membership	\$22.00
Junior Membership	\$12.00

Full Name: Mr/Mrs/Miss

Address

.....Postcode

Phone /Fax Number Email address

Mobile Phone Number Show Number



Be Club Conscious!!

And nominate for
Committee positions

Use the nomination form below

The South Coast Orchid Club Inc.
 Nomination form for Committee for the Year 2001

Nominee

Proposed by

Seconded by

Position Nominated for

Nominees Accepted

**SURFACE
MAIL**

If unclaimed please return to
P.O. box 314 Oaklands Park S.A. 5046
