



*May
2004*

The South Coast Orchid Club Inc. Gazette

**Patron
Sydney Monkhouse**

PRESIDENT	TREASURER	SECRETARY
Geoff. Spear	Robyn Pope	Lucy Spear
HAPPY VALLEY	MARION	Box 314 OAKLANDS PK
83814420	82960709	83814420

AT A GLANCE

THE NEXT MEETING of the South Coast Orchid Club will be held at 8pm on the 11th of May 2004 at St Bernadette's Hall, St Mary's. One membership fee covers all three groups in our Club.
Guest Speaker: Colin Jennings on 'Award Judging'.

BEGINNER'S CLASS. 7.15 pm before the main meeting (Note new time).
By popular request the speaker will be Graham Morris from Valley Orchids.

DAYTIME At South Brighton Community Hall, Dover Square, Broadway, South Brighton Thursday 13th May 2004 at 2pm. Guest speaker: Pat and Dave Harmer on Pests and Diseases.

SPECIES GROUP Monday 3rd May 2004 at 8pm. South Brighton Community Hall, Dover Square, Broadway, South Brighton.

THANKYOU Gordon Brooks for last months raffle plants.

RAFFLE PLANTS for May donated by Norman Woodend.

LUCKY NAME BADGE Make sure you wear your name badge. You may win a prize!!

BIRTHDAY DRAW: Put your name in the box for your birthday present. You may win it!!!

MONTHLY ROSTERS

Supper: Judy and Rod McRedmond

Computer:

Hostess: H Alsop. 2 more needed please. Phone Lucy.

Judging Panel: P&D Harmer, N Woodend, I Attenborough, J Gay and B Bower.

HALL ROSTER: Please help! We need members to set up the hall for the main meeting at 7pm. The same members have been doing this for years. If you can help we need 6 volunteers. You only need do it every 3 months. We also need members to help take the tables away after the meeting. If you are able to help, please give your name and phone number to Lucy. Many hands make light work. Thank you.

Have an opinion or something to say
contact the Editor Ron Parish
Ph 08 8298 4118

E-mail: ron@scoc.org.au

People who submit articles to the Club for inclusion in our Gazette express opinions which are not necessarily those of the Club. No Guarantee is provided to anyone using the ideas & opinions expressed in these articles.

Items must be delivered to the Editor by the Thursday following the Committee meeting.

2004 Club meeting dates

June

7 Species group
8 Main Group Tom Burian on breeding
10 Daytime Group Ron Parish

July

5 Species group
13 Main Group Ian Kilpatrick on Struggling with Cats
15 Daytime Group

August

2 Species group
10 Main Group David Pettafore
12 Daytime Group

September

6 Species group
14 Main Group Speaker from S.A.R.D.I.
16 Daytime Group

October

4 Species group
12 Main Dave Harmer on Oncidiums
14 Daytime Group

November

1 Species group
9 Main Trevor Jacob
11 Daytime Group

December

6 Species group
14 Main
16 Daytime Group

AUTUMN SHOW

Judging will be at the daytime meeting hall, South Brighton Hall, Broadway, South Brighton on Sunday May 2nd at 9.30am. The Hall will be open from 8.30am to receive plants. Judging will commence promptly as the hall is only available till 1.30pm.

Plants will be transported to the Colonnades Shopping Centre by the Club. Please be assured that every care will be taken with your plants. Take out time is 5.00pm on 8 May

The Centre is open from 8.15am on Monday

Judges: Peter Speer, C Gregg, R Pankoke, T&M Chance, J Shaughnessy, D & P Harmer, N Woodend, I Attenborough and Reg Shooter.

NEWS FROM THE SPECIES GROUP

Attendance was down compared with other meetings with 13 members attending however many fine plants were displayed

They were: *Laelia perinni*, *Paph. bellatulum*, *Paph. liemianum*, *Mormolyca ringens*, *Den. sulawesiense*, *Doritis pulcherrima* and *Odontoglossum rossii* which was also 'Plant of the Meeting'.

Some discussion was held in regard to entering species plants for the upcoming SAROC show but the decision was held over to next month's meeting on Monday 3rd May.

No photos were taken as our photographer was at work and could not attend this meeting.

Gerald Voskamp

Paph. bellatulum



WHAT'S GOING ON BEFORE THE MEETING?

Trading Table: Exciting new lines available, pots, hangers etc. Don Beibrick always adds excitement with his plants. "Apple blossom dendrobium always flowers every year for me!" were his words!

Raffle Tickets: See Peter Fenton for your orchid plant raffle tickets. Thanks Peter you do a great job. See Wendy for your 'Lucky Squares'. This month it's a selection of garden requirements for the lucky winner.

Library: Here you'll find Henk, he even has a new book and there's more to come. Thank you to Robin Pope and Miles Harper for the book donations. Miles' book was donated for last month's 'Lucky Squares' winner.

Treasurer: Robyn-always a busy lady!

REPORT FROM THE DAYTIME GROUP

We had a small but very enthusiastic group of people who had a hands on potting exercise with Graham Morris. We had small plants growing in agar solution in flasks which were then planted out into community pots. An orchid seed pod was then shown to the group who couldn't believe how large the pod was. Graham's potting mix was also very interesting to our members who then all agreed it was a very stimulating and educational experience. Thank you Graham, your information and sharing of your knowledge was greatly appreciated. Only one plant was benched, there's not a lot around at the moment, the plant was *C. Bowringiana* x 'Waringham Beauty x Purple Heart' owned by Mrs Dorothy Carassai. Some of the ladies in the group wanted to know where Graham's orchid business was so ladies, here it is!

Valley Orchids Prop: Mr Graham Morris

156 Pimpala Road, Morphett Vale Phone: 8381 2609

Bye, Dorothy.

COMMITTEE MEMBERS

Senior Vice president: M Baulderstone

Junior Vice President: John Robinson

Members: Dorothy Carassai, Hank Van Leuveran, Hazel Alsop, Des Alsop.

Relieving Registrar of Judges: Gordon Brooks

Editor: Ron Parish

If you are seeking help, ask a committee member.

PRESIDENT'S MESSAGE

Dear Members,

Last month's meeting was very well attended with 71 people in attendance. We had visitors from Warnambool, friends of B and R Wilson, plus 7 other visitors but with so many guests we do need more hosts. This is an enjoyable position where you are introducing people to your orchid club and to other members. You might explain the functions of the Club, make them feel welcome and a part of the Club and encourage them to come back again. Hazel Alsop is our first volunteer hostess. Thank you Hazel.

Thank you Russell for an excellent presentation. I'm sure everyone enjoyed your talk and slides. For members who could not attend the meeting, Edda and Russell have made a video for the Club that is available for borrowing. This will be put into the Library. Thanks again!

Reading through past Gazettes we learnt that the first Autumn show was the week before Mother's Day in May 1988. This was when Keith Northcote was president. Over the past two years we have been trying to find all the past Gazettes to bind and put into the Library. What a shame it would be if we lost the history of the club. Incidentally there's wonderful reading in these past Gazettes.

Thank you to Pat and Dave Harmer for a very interesting talk. What a true professional to fill in at the last moment and to cope with the gremlins that took over his computer! Well, it was April 13th! Dave and Pat were booked in for later in the year but Graham Zerbe had another important commitment with the Gawler Club so he offered to be our speaker early next year. His subject is Display Judging.

Remember in my March letter I mentioned 'Bring a Friend or Neighbour' and if they join in May you would both receive a plant? Well, as new members receive a plant, a name badge, a Constitution and a magazine this means 2 plants to a new member! We have these plants here waiting for their new homes!!

Unfortunately we have found it necessary to cancel the trip to the Country Challenge as we could not get minimum numbers. However, we know some of our members are going to Ararat anyway and if any of you would like a passenger we have 3 members very keen to go along. Let Lucy know. In place of the Country Challenge trip we will arrange a plant visit. Stay tuned. Once again the daytime chapter had a good attendance and a happy afternoon was had by all. You may have to come along. Dorothy is enjoying her new role and doing an excellent job as Convenor of this group.

Being a Cym grower myself and attending the species group I am finding it very interesting to learn where all these little gems come from and how to pronounce their names. Some of them are real tongue twisters! To the founding members I congratulate you for another interesting group for SCOC. These members are a very dedicated group of growers.

Our first show for 2004 is the Autumn Show to be held at the Colonnades Shopping Centre. We will require as many of your flowering plants as possible so we can have a brilliant show. Autumn shows are very colourful with all the Catts and other genera but not many Cyms!! If you have trouble transporting your plants ring Lucy and she will make arrangements for the plants to be picked up and taken to the hall at Dover Square. Don't forget, clean pots, leaves polished with milk and water and stakes with twisties tied below the bottom flower. Follow these simple rules and we will have a successful show. May you all be winners!!

Good growing, Regards Geoff

WINTER SHOW

The venue for the Winter Show is the Pasadena Foodland Shopping Centre on Five Ash Drive. Show dates are Sunday 25th July to Saturday 31st of July. Take out time is 4pm. Judging will take place at Hamilton Secondary School, 815 Marion Road Mitchell Park on Saturday 24th July. More information in the June Gazette.

FLOWER OF THE DIVISION AND FLOWER OF THE NIGHT

Lc Sierra Skies grown by Bev & John Gay



Open Division

Australian native epiphyte hybrid

138	Den. Annes Rainbow 'Surprise'	Bev & John Gay (65)	3
82	Den Jedda Yondi x Ellen	Bev & John Gay (65)	2

Cymbidium < 60mm (all colours)

86	Cym Kaulani 'Summer Dream'	Helmuth Gerber (42)	3
87	Cym Dear Lisa 'Mikado'	Helmuth Gerber (42)	2

Cymbidium 60 - 90 mm (all colours)

88	Cym Spicy Dream	Helmuth Gerber (42)	3
89	Cym Arkaroola x Peter Pan	Helmuth Gerber (42)	2
90	Cym Valentine Love 'Leanne'	Malcolm Tiggeman (465)	1

Laeliinae Non Standard Cluster

91	Blc Makana Gold x Chocolate Drop	Gerald Voskamp (1650)	3
92	C. Chocolate Drop 'Anthea'	Don S Biebrick (103)	2
93	C. Minerva 'Highercombe'	Don S Biebrick (103)	1

Laeliinae Non Standard Other

94	Lc Sierra Skies	Bev & John Gay (65)	3
95	Blc Golden Delicious	Peter & Geraldine Flavel (487)	2
96	Ctna. Capri 'Lea'	Tony Deionno (24)	1

Laeliinae Standard < 100mm

97	Lc Ovation	Peter & Geraldine Flavel (487)	3
98	Blc Samba Splendour	Richard & Beryl Wilson (321)	2
99	Blc Languedoc 'Singapore Welcome'	Don S Biebrick (103)	1

Oncidiinae hybrid

113	Onc Sharry Baby	Gerald Voskamp (1650)	3
114	Colm. Wildcat 'Panther'	Peter & Geraldine Flavel (487)	2
115	Milt Goodale Moir 'Golden Wonder'	Don S Biebrick (103)	1

Oncidiinae seedling

116	Colm. Wildcat 'Panther'	Peter & Geraldine Flavel (487)	3
-----	-------------------------	--------------------------------	---

Orchid Genera not listed elsewhere - hybrid

119	Neost Lou Sneary	Geoff & Lucy Spear (5)	3
120	Phrag Calurum	Bev & John Gay (65)	2
121	Neost Lou Sneary	Bev & John Gay (65)	1

Orchid Genera not listed elsewhere - species

122	Brs nodosa	Peter & Geraldine Flavel (487)	3
123	Mormolyca	Gerald Voskamp (1650)	2
124	Doritis pulcherrima	Gerald Voskamp (1650)	1

Paphiopedilum Novelty

125	Paph Carmel Chambers	Gerald Voskamp (1650)	3
-----	----------------------	-----------------------	---

Paphiopedilum species

126	Paph spicerianum	Peter & Geraldine Flavel (487)	3
-----	------------------	--------------------------------	---

Zygopetalum hybrid (inc. intergenerics)

117	Z. Kiwi Choice 'Eileen'	Don S Biebrick (103)	3
118	Z. Titanic 'Monarch'	Peter & Geraldine Flavel (487)	2

FLOWER OF FIRST DIVISION

C. Bowringiana x Waringham Beauty x Purple Heart
grown by Dorothy Carassai



First Division

Australian native epiphyte hybrid

100	Den Janine Banks	Suzanne Willcox (1481)	3
-----	------------------	------------------------	---

Australian native epiphyte species

101	Den monophyllum	Norman Woodend (1525)	3
-----	-----------------	-----------------------	---

Cymbidium > 90mm (all colours)

102	Cym Last Chance ' Nancy'	Murray Baulderstone (25)	3
-----	--------------------------	--------------------------	---

Laeliinae Non Standard Cluster

103	C. Valentine Day	Murray Baulderstone (25)	3
-----	------------------	--------------------------	---

104	C. Valentine Day	Murray Baulderstone (25)	2
-----	------------------	--------------------------	---

Laeliinae species

105	Enc cochleata	Suzanne Willcox (1481)	3
-----	---------------	------------------------	---

Laeliinae Standard < 100mm

107	C. Bowringiana x Waringham Beauty x Purple	Dorothy Carassai (294)	3
-----	--	------------------------	---

108	C. Hawaiian Wedding Song	Suzanne Willcox (1481)	2
-----	--------------------------	------------------------	---

109	Blc Goloxa Duldons 'Pokai'	Rito Silvestri (302)	1
-----	----------------------------	----------------------	---

Laeliinae Standard > 100MM

106	Blc Languedoc 'Singapore Welcome'	Rito Silvestri (302)	3
-----	-----------------------------------	----------------------	---

Laeliinae Standard Cluster

110	C. Browniae 'Riga'	John Robinson (1448)	3
-----	--------------------	----------------------	---

Oncidiinae hybrid

127	Milt May Moir	Ian & Denise Attenborough (450)	3
-----	---------------	---------------------------------	---

128	Milt Cogniaw X	Rito Silvestri (302)	2
-----	----------------	----------------------	---

Oncidiinae species

129	Rossioglossum grande	Terri Rees (50)	3
-----	----------------------	-----------------	---

Paphiopedilum Novelty

111	Paph Crossianum	Ian & Denise Attenborough (450)	3
-----	-----------------	---------------------------------	---

112	Paph Redstart x charlesworthii	Terri Rees (50)	2
-----	--------------------------------	-----------------	---

Zygopetalum hybrid (inc. intergenerics)

134	Z. John Banks 'Purple Lips'	Murray Baulderstone (25)	3
-----	-----------------------------	--------------------------	---

135	Zga. Claire Fisher	Murray Baulderstone (25)	2
-----	--------------------	--------------------------	---

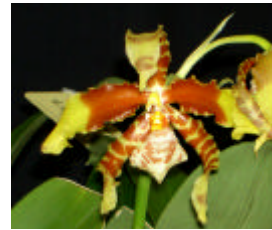
Zygopetalum species

136	Z. crinitum	Suzanne Willcox (1481)	3
-----	-------------	------------------------	---

Best Flower of Second Division

Enc citrina x mariae grown by Ruth & Gunter Eckhard

(Unfortunately no picture was taken of this plant)



Ross. grande
also grown by Ruth & Gunter Eckhard

Second Division**Cymbidium < 60mm (all colours)**

85	Cym Mad Peter	Ruth & Gunter Eckhard (436)	3
----	---------------	-----------------------------	---

Laeliinae Non Standard Other

83	Enc citrina x mariae	Ruth & Gunter Eckhard (436)	3
----	----------------------	-----------------------------	---

Orchid Genera not listed elsewhere - species

137	Ross. grande	Ruth & Gunter Eckhard (436)	3
-----	--------------	-----------------------------	---

Seen at the April Meeting - Brassavola nodosa

Brassavola related to Cattleya and Rhyncholaelia is a genus of around 15 or so epiphytic orchid species found from areas in Mexico, Caribbean Islands and from Northern parts of South America through to Argentina. Most are found at altitudes between 3,000 and 7,000 feet. The flowers of these are spidery in shape and are found in colours of white, pale yellow, cream and green. The plant seen at the meeting was Brassavola nodosa and was nicely



grown and presented by Peter & Geraldine Flavel. This species is also known as 'The Lady of the Night Orchid' and has quite a powerful perfume particularly at night. In nature it comes from Mexico, Guatemala, West Indies, Columbia and Venezuela and grows in areas where there are dry times of the season. Each raceme has 4 to 7 flowers about 70mm across and can last for over two months. It flowers several times in a year and is a very rewarding species to own and flower. Brassavola nodosa has been used in hybridising with Barkeria, Epidendrum, Broughtonia, Cattleya, Cattleyopsis, Diacrium, Laelia, Schomburgkia, Sophronites, Leptotes and Tetramicra resulting in 47 or so registered intergeneric combinations. David Harmer

VALE: Marlene Baulderstone

It is sadly and with deep regret that we wish to inform our members of the passing of Marlene Baulderstone. Marlene was the wife of our past president Murray. They were married for almost 50 years.

We the members and committee of South Coast Orchid Club extend our love and condolences to Murray and his family in their time of grief.

PAUSE A MOMENT.....

Please remember your Club needs your help in raising money and our Show Trading Table is an excellent way of doing this.

All plants sold have a commission to the Club put on them which certainly helps the Club. Club meeting nights the commission is 10% and at the Show Trading Table the commission is 25% and 30% if you are somehow unable to help during the show.

All plants must be clean and tidy, they will be inspected, eligible name tag in place and well ticketed with price and colour of flower if not open.

Cyms, Cats, Zygo, Epi and natives are all customer favourites, especially when in flower, so check around, you never know what's hidden somewhere, maybe three of one plant. Also any clean old orchid magazines you no longer need could be sold on the Trading Table on Club meeting nights or hard cover books on orchids could perhaps be donated to our Library.

If you need any advice on what to do, ring Dorothy on 8277 1793 or Lucy on 8381 4420 and we'll be glad to help!

Regards, Dorothy.

EXTRACT FROM MAY 1987 GAZETTE

'Your committee is anxious of gaining new members. Can you help? One idea put forward is to hold a day time meeting for those who are unable to attend our normal night time cultural meetings.'

Do you know at one stage we had 45 members attending our daytime segment. I wonder who put this idea forward?

The challenge is once again put forward to all members. Lets try for 40 new members by November 2004. Let's have your ideas!

NOEL D OLIVER

Australian Native Mericlones

Just Arrived \$8.00 each

Jesmond Sparkler, Zip, Zipalong, Cobber violet/
gold, Lavender/Lime, Yes Please, Bridal Blush,
Victorian Pride,

Kingianum Big Foot N.R.F.

Phone 0884434945 Mobile 0418854034

EXTRACTS FROM A TALK GIVEN BY KEITH NORTHCOTE TO THE DAYTIME CHAPTER OF THE SCOC IN MARCH 1994

Fertilizers for Orchids.

There are many fertilizers available on the market today that are suitable to use in a wide range of agricultural and horticultural applications. Many of these can be used for growing orchids, some being more suitable than others and some of these more acceptable to individual orchid grower's personal preferences. Before considering fertilizers themselves we should look at what is expected of them and what they are made of.

There are fifteen or sixteen elements needed for plant growth. Three are Carbon (C), Hydrogen (H) and Oxygen (O). These are obtained from water, Carbon Dioxide from the air and oxygen in the air or growing medium. They are the building blocks in the skeleton of all plants and are the foundation needed before any of the remaining elements can play their parts.

Six of the other elements are called the major elements. These are:- Nitrogen (N), Phosphorus (P), Potassium (K), Calcium (Ca), Magnesium (Mg) and Sulphur (S). The first three of these feature in the N.P.K. ratio used to determine the initial suitability of the fertilizer for a specific purpose. The role of each element is:

N: essential for growth in all plants

P: essential for photo synthesis, creates all the foods, starches and sugars in plants, helps cell division and growth

K: controls the water movement in plants also the chemical reactions resulting in flowering and fruiting

Mg: every molecule of chlorophyll has an Mg atom at its centre. It is essential for photosynthesis to occur

S: essential for proteins, the smell of the cabbage family indicates its presence

The six minor elements are often called the trace elements or micronutrients.

These are; Iron (Fe), Manganese (Mn), Zinc (Zn), Copper (Cu), Boron (B), and Molybdenum (Mo).

They are called micro because of the small amounts necessary (about 100 times less than the major elements).

Fe: is essential if plants are to make chlorophyll (green tissue in plants) and use nitral. A constant supply of Fe is required so that it is available for all new growth-it cannot be transferred from old to new growth,

Mn: assists protein formation and photosynthesis

Cu assists chemical reactions for fixing soil bacteria.

Other necessary elements (some for specific purposes) are;

Chlorine (Cl): its role is a mystery and difficult to determine

Aluminium (Al): helps blueing of hydrangeas by reducing phosphate acidity

Cobalt (Co): assists rhizobium bacteria which in the case of orchids lives on the outside of the roots and helps the movement of water and nutrients in the plant

Silicon (Si) required by some plants such as rice and sugar cane.

Fertilizers can be organic or inorganic. Some growers may favour one against the other but in actual fact both can be used. It is important however to check their composition. see attached table)

Examples of Organic Fertilizers are;

Blood and Bone: not considered as good as it used to be; contains 4-5% Nitrogen, 5% Phosphorus and little else. No K, Ca or S for example.

Neutrog: derived from poultry breeders is a fairly complete organic fertilizer. It contains portions of the necessary trace elements and encourages growth of micro organisms.

Dynamic Lifter: similar to but more expensive than Neutrog.

Fish Emulsion and Nitrosol: are liquid organic fertilizers. Nitrosol is good and easily applied.

Examples of Inorganic Fertilizers are:

Gro-Plus (Camellia and Azalea food) a granular fertilizer with good NPK balance plus Ca and trace elements.

Aquasol: a soluble fertilizer with a high N content that will therefore correct yellowing of leaves-has trace elements but lacks Ca and Mg. These however are present in Adelaide tap water.

Campbells Yellow: a soluble plant food with a good NPK balance plus trace elements including Co; especially formulated for orchids to increase flower production.

Special Purpose fertilizers: eg high nitrogen to promote leaf growth-high phosphorus to promote root growth in seedlings.

Neutricote (green): a slow release fertilizer eg at a soil temperature of 10C release time is 800 days whereas at 35C release time is only 125 days. Release is thus dependent on moisture and temperature and release over a six month period can normally be expected from this formulation. Inert coatings on this fertilizer are about 6%.

Fertilizing Program.

A suggested program is

Gro-Plus: used in the makeup of the orchid mix contains most of the major and minor elements and feeds organisms which grow as the bark composts and hence prevents the organisms from robbing the plant of food.

Neutricote and Neutrog sprinkled on top of the top.

Aquasol or Campbells Yellow used throughout the year as a foliar food and in the pot whenever considered necessary.

For Cattleyas and Phalaenopsis and other hot house plants foliar feeding is used much more than for Cymbidiums. However smaller quantities of Neutricote and Neutrog are required and in regard to the latter care must be taken to avoid surface caking which can interfere with root development.

Finally in selecting fertilizers, consideration should be given to the biuret content. In the production of urea which is used in many fertilizers, biuret is formed which at concentrates of more than 0.4% has a detrimental effect on plants.

Analysis of Common Fertilizers

Fertilizer	%N	%P	%K	%Ca	%Mg	%S
Neutrog	3.0	2.0	1.9	7.0	0.65	2.0
Gro Plus	6.0	3.4	5.3	3.6	-	6.3
Aquasol	23.0	4.0	18.0	-	-	-
Campbells Yellow*	11.8	13.2	16.6	-	-	-
Neutricote	13.0	5.7	9.1	6.0	-	-

Fertilizer	%Fe	%Zn	%Mn	%Mo	%B	%Cu	% Max	Biuret
Neutrog	0.2	0.035	0.05	0.0002		0.003	0.006	-
Gro-plus	0.4	0.005	0.01	0.001	0.01	0.005	0.04	
Aquasol	0.06	0.05	0.15	0.00013		0.0011	0.06	0.4
Campbells Yellow*	0.03	0.01	0.05	0.01		0.006	0.01	-
Neutricote**-	-	-	-	-	-	-	-	-

* Also includes Cobalt (Co) 0.002%

** Inert coating 5.7%

Sponsors for our Club

We wish to thank the following persons who have supported us and our shows with donations etc.

Members are requested to keep these people in mind when purchasing orchids and supplies

Geoff Spear

Gordon Brooks

Graham Morris (Valley Orchids)

Jim Shaughnessy

John & Bev Gay

John Nicholls

Lesley Gunn

Moss Bray (Sims Orchids)

Noel Oliver

Norm Woodend

Pasadena Foodland

Richard Fishlock

Robyn Pope

Ron Parish

Ted & Marjorie Chance



If unclaimed please return to
P.O. box 314 Oaklands Park S.A. 5046
