



1965 to 2005



**DECEMBER  
2005**

**The South  
Coast  
Orchid  
Club  
Inc.  
Gazette**

**Patron  
Sydney Monkhouse**

ABN 83 245 384 076

**PRESIDENT    TREASURER    SECRETARY**

Geoff. Spear

Judy  
McRedmond

Lucy Spear  
Box 314  
OAKLANDS PK  
83814420

82933545

**AT A GLANCE**

**THE NEXT MEETING** of the South Coast Orchid Club will be held at 8.15pm on Tuesday 13<sup>th</sup> December 2005 at St Bernadette's Church Hall at St Mary's. Corner of Walsh Ave and South Rd

Doors will be open at 6pm to bring in your plants for judging. Please ring Geoff on 8381 4420 if this is to early for working members to bench their plants.

Plants must be benched by 6.30pm.

Each member will receive a Lucky Door ticket at no cost.

1<sup>st</sup> Prize Coorong Adventure Cruise 6 hours for 2 people

2<sup>nd</sup> & 3<sup>rd</sup> Prize Dinner for 2 each at Flagstaff Hotel

4<sup>rd</sup> Prize Free membership for 1 year.

Christmas Dinner 7pm

Guest Speaker – P & D Harmer Subject: - Stanhopea's.

Father Christmas has been invited

Please bring a gift, (a gift you would be pleased to receive yourself)

**BEGINNERS CLASS** next February.

**DAYTIME GROUP** to be held at South Brighton community hall, Dover Square, Broadway, South Brighton, 15<sup>th</sup> December 2005 at Pam. Guest speaker is Noel Oliver. Please bring a gift, receive a gift.

**SPECIES GROUP** Species group BBQ 5<sup>th</sup> February 2006 at Irene's and Ron's

Time 11.30 Please bring Salad, Cake and Chair

R.S.V.P Lucy 8381 4420

**SOUTHERN REGIONAL GROUP** – Sunday 18<sup>th</sup> December 2005 at Carrackalinga House, 17-19 Torrents St Victor Harbor .

Guest Speakers – John Gay    Subject – Australian Natives when and how to repot these delightful orchids

Christmas Lunch at Middletown Tavern. Special Lunch \$7.00 or you may order from the menu.

Time 11.30 to 12pm

Father Christmas will attend. Please bring a gift to the value of \$5.00 and receive a gift.

**Reminder 2006 meetings on 1<sup>st</sup> Wednesday of the month.**

One membership covers all groups.  
CHECK WHAT'S NEW ON THE INTERNET

NNNNNNNNNNNN

[http://members.optusnet.com.au/~vcs\\_filming/](http://members.optusnet.com.au/~vcs_filming/)

Check it out to see all the updates gazettes & pictures.

**Have an opinion or something to say**  
contact the Editor Ron Parish Ph 08 8298 4118

**E-mail [vcs\\_filming@optusnet.com.au](mailto:vcs_filming@optusnet.com.au)**



## Public Liability

Under insurance guideline all members and Committee attending any function or meeting held by the Club must now sign an attendance book by name and signature.

**RAFFLE PLANTS** – donated by Geoff Spear

**LUCKY NAME BADGE** make sure you wear your name badge you may win a prize!!

### MONTHLY ROSTER

**COMPUTER**-Bev Gay

**HOSTESS**- Irene Parish and Vanessa Talbot

Thank you for October **RAFFLE PLANTS** – donated by D Cammack

### **JUDGES ROSTERS**

**Registrar** - 6pm M Chance

#### **Open**

R Shooter

T Chance

I Attenborough

**Pencillor** – M Boulderstone

#### **First Division**

D Harmer

B Bower

**Pencillor** – P Flavel

### **Second Division**

J Gay

P Harmer

**Pencillor** – G Flavel

**Judges to arrive at 6pm to direct members to divisions**

J Gay

B Bower

T Chance

### **2005 Club meeting dates**

#### **February 2006**

1 Main AGM, Presentation night, popular vote of the year P & D Harmer – How to be promoted

5 Species Group BBQ

12 Daytime Group

14<sup>th</sup> Cymbidium Appreciation

19 Southern Group

#### **March**

1<sup>st</sup> Main – Soult's Tools of the Trade

6<sup>th</sup> Species

16<sup>th</sup> Daytime group

19<sup>th</sup> Southern Group

14<sup>th</sup> Cymbidium Appreciation

#### **April**

5<sup>th</sup> Main – M & G Hazeldine How to prepare pants for shows

3<sup>rd</sup> Species

11<sup>th</sup> Cymbidium Appreciation

13<sup>th</sup> Daytime Group

16<sup>th</sup> Southern Group

#### **May**

3<sup>rd</sup> Main – (Autumn Show Judging)

Autumn Show Centro Court Colonnades

Sunday 7<sup>th</sup> May – Saturday 13<sup>th</sup> May

1<sup>st</sup> Species

11<sup>th</sup> Daytime Group

21<sup>st</sup> Southern Group

9<sup>th</sup> Cymbidium Appreciation

#### **June**

7<sup>th</sup> Main – Jan and Bill Miles Species and Cyms

5<sup>th</sup> Species

15<sup>th</sup> Daytime Group

18<sup>th</sup> Southern Group

13<sup>th</sup> Cymbidium Appreciation

#### **July**

5<sup>th</sup> Main

2<sup>nd</sup> Judging Hamilton School

Winter Show Centro Kurralta Park Anzac Hw

Sunday 2<sup>nd</sup> July – Saturday 8<sup>th</sup> July 2006

3<sup>rd</sup> Species

11<sup>th</sup> Cymbidium Appreciation

13<sup>th</sup> Daytime Group

16<sup>th</sup> Southern Group

## **PLANT VISIT**

4<sup>TH</sup> December 2005

10.30 Kevin Weston – Disas and other Genera

Acklands Hill Rd, Coromandel Valley

BBQ please bring small salad or cake to share.

Club will organize meat, gold coin donation please.

Please phone me on 0402 602 152 on the day, you may need directions.

10.15 MEETING PLACE (Duck Inn Hotel Car Park) Coromandel Valley and we will proceed to Kevin's in convey.

## **MISCELLANEOUS INFORMATION**

### **REMINDERS**

- ? All library books to be returned
- ? All nominations for committee of management to be in the secretary's possession by the close of December cultural meeting.
- ? No cultural meeting in the month of January 2006
- ? Annual general meeting Wednesday 1<sup>st</sup> February 2006, presentation night Popular vote of the year, P & D Harmer – How to be promoted,
- ? Committee meeting 11<sup>th</sup> January 2006 at D & J Carassai, Dorene St, ST MARYS
- ? Species Group BBQ Sunday 5<sup>th</sup> February, Time 11.30 Please bring Salad, Cake & Chair.  
Please R.S.V.P Lucy 8381 4420

### **FOR SALE**

*Members you may purchase from R Parish 8298 4118 CD of past Gazettes going back many years. You will find great information in these magazines, cultural notes, past events etc.*

Price \$5.00

## **The South Coast Orchid Club of South Australia INC.**

### **SUBSCRIPTION RATES**

- ? Family Membership \$30.00
- ? Single Membership \$22.00
- ? Junior Membership \$14.00

### **RURAL/INTERSTATE MEMBERSHIP**

- ? Family Membership \$27.00
- ? Single Membership \$20.00

## **CONGRATULATIONS TO IAN ATTENBOROUGH**

Ian and Along with six other Judges

have now completed the judges training course congratulations at all concerned.

## **PRESIDENTS MESSAGE**

Dear Members,

*The South Coast Orchid Club would like to wish you all a Merry Christmas and a very Happy New Year.*

Our Ruby anniversary year has been and gone. I do hope all members who started this club were remembered in some way. I know Lucy, Ron and Murray tried very hard to find past members to join in the celebrations, Thank you to those past members who came along and made this night a great success.

2005 saw at least sixty new members all attending the meetings and enjoying the wonderful world of orchids, majority of new members had been given an orchid but are now learning how to look after many other orchid genera as well. This goes to show there is a definite interest with the general public on orchid culture. We certainly saw a lot of changes in 2005. Thank you to Richard Fishlock who devised the Pencillors system; our club was the first to have a Pencillors group.

Winter and Spring Show sites we had to find (quickly) two new venues. (These shows were so successful financially we are now in a great financial position)  
We had a display at Hallet Cove and Willunga, with these display's we gained new members.

January saw the reformation of the Southern Group at Victor Harbor at the last meeting we had Thirty one members in attendance and the membership is growing each month, why not take a Sunday drive (3<sup>rd</sup> Sunday of the month) and meet these very keen orchid members, they would love to chat about how you grow your orchids.

Committee feels we must give members what they need hence a Cym Appreciation night. I can appreciate the beauty of all orchids but Cym's are my main love. Cym Appreciation group will cover culture, Hybridizing, potential of plant, latest technology. Bring your plants along for discussion (Judging will still be at the main group)

Members, Judges and committee, I would like to wish you all a Merry Christmas and a very Happy 2006. Thank you for coming along each month because without you we would not have such a successful club. Thank you to the Judges, Pencillors, committee and B Gay for all the work you do each month. We do appreciate all you do for us.

Lesley and Peter Fenton, Don Biebrick, John Carassai. Thank you.

Irene and Ron, Dorothy, Judy and Lucy thank you for the many hours you put into making the club so successful a lot of this work is done behind the scene. For the helpers who stay back putting tressles away etc. Thank you have a great 2006.

Next year you will see at least six new faces on your committee and most of the retiring committee have offered to help when they can, with the club growing so quickly all help is greatly appreciated,

2006 we will have one interstate speaker and we are negotiating for a second speaker. Members please make sure you receive your Lucky Door Ticket at Christmas meeting for the Lucky Draw.

Please phone Lucy on 8381 4420 for Diabetic or Vegetarian meals

Good Growing!

Kind Regards,

Geoff

**VALE Bill Fisher,**

On behalf of committee and members our deepest sympathy and condolences to all the family

Over the Years Bill had occupied a number of valuable positions in our Club Most recently that of Show Marshalls

**SOUTHERN REGIONAL GROUP**

Committee and fellow members would all like to wish you a Merry Christmas and a very Happy New Year.

Victor Harbor and surrounding areas have always been very special to me, meeting you all and getting to know you over the past ten months has been very special to the speaker's, Committee and members who have driven to Victor Harbor to take part in your meetings, I feel the great excitement will happen in 2006 look at all you have learn't about orchids, the great friends with a common interest, by next year I can see Geoff and I will be looking at blooms from Victor Harbor that you have proudly grown.

I would like to thank Beryl and Richard, Peter, Geraldine, Ron and Irene for lending us your plants to take to Victor Harbor all this year. (I know some were your pride and joys) They were greatly appreciated by the members.

We promised you a treat for November meeting and this is what you got. George certainly loves and knows how to pass his knowledge onto members about his beloved Sarcodchilis.

**CHRISTMAS MEETING  
NOTE CHANGE OF DATE  
SUNDAY 18<sup>TH</sup> DECEMBER**

We will need to know how many members will attend as the hotel is very busy.

LUNCH SPECIAL \$7.00 or you may order from the menu.

LUNCH: Middleton Tavern, MIDDLETON

TIME: 11.30 – 12

2pm meeting rooms Torrens St Victor Harbor

Guest Speaker: John Gay Subject: Australian Natives (how to divide pot etc)

**Welcome & Congratulations to  
NEW MEMBERS**



Malcolm Guy, Pamela Ferguson, Joan Mc Mahon

**COMMITTEE MEMBERS 2006**

Please use nomination forms to appoint new committee members for 2006 forms to be handed to secretary before closing of December 2005 meeting.  
URGENTLY need 5 committee members

**The South Coast Orchid Club Inc.**

**Committee nominatbn Form**

**Nominee's Name** .....

**Proposed by** .....

**Seconded by** .....

**Position Nominated for** .....

**Nominee Accepted** .....

**Please complete and hand to Secretary "Lucy Spear."**

**Nominations must be received by the close of the December Cultural Meeting**

**DAYTIME GROUP**

Hi Everyone,

We had a very lively afternoon today, with all members contributing to a very informative session with a very experienced grower answering a lot of varied questions on different genera. Geoff Spear, answering all questions on Cymbidiums, Geraldine Flavel was designated the Paphiopediluims and Phalaenopsis and Don Biebrick Cattleya Genera and soft cane Dendrobuims, they all explained what they did, problems they had encountered and solved, and the different types of mixes and additions they used for that particular genera, this information was very interesting and I'm sure we all learned something new (I must go and cut off my phaphiopedilum flower, it's not good leaving them on too long)

Apologies from Marie Bravery, she had no transport today, we hope all goes well for next month Marie, also apologies from Ron and Irene Parish and Joan Kelly who wasn't feeling so good, Joan hopefully we'll catch us again next month.

Lots of lovely plants were benched today, many different genera, Cyms, Cluster Cattleya, Bifrenaria harrisoniae, Colmanera, Sarcophilus and Dendrobuims, all beautifully grown, very clean and well presented.

Geraldine Flavel's Phalaenopsis Lippstadt Zamber Rose was voted best in our popular vote competition, a beautiful flower, the stem had been cut and had therefore branched out, very well grown as usual by Geraldine, she certainly loves her orchids, Congratulations and well done. Lucy Spear *Cym Sweet Devon "1103"* was voted second best, well done Lucy, this lovely plant was well grown with lots of flowers on numerous spikes. Congratulations.

The meeting was closed thanking all for their attendance, afternoon tea was then taken by all!

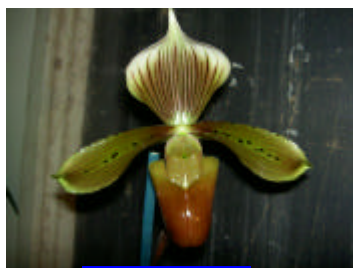
Bye  
Dorothy.

## SPECIES GROUP

Eighteen members braved the worst November night of rain for 30 years to attend the November meeting of the South Coast Orchid Club Species meeting. The weather may have been wet and stormy outside but once inside the hall it was dry and friendly.

There were 16 species brought in creating a lot of discussion. It is interesting to see the different species benched each month as the year proceeds. *Cattleya*'s dominated this month. There were white ones represented by *C. skinneri* & *C. intermedia*, two very similar orchids.

In the coloured *Cattleyas* there was a lovely plant of *C. lawrencianum*, a species not often seen, carrying large 150mm very fragrant rose coloured flowers with a velvety rose-purple labellum. The colour orange was displayed on the species *C. aurantiaca*. Quite different to the previous orchid only having 40-50mm orange-yellow flowers that do not fully open. A plant of *C. X guatemalensis* was brought in and whilst it is not strictly a species it is a naturally occurring hybrid between two of the other *Cattleyas* benched, the white *C. skinneri* & the orange *C. aurantiaca*. The resultant hybrid exhibits flowers about 50mm across fragrant usually orange-yellow with a tubular labellum marked with purple streaks.



*P. tonsum*



*C. skinneri*

Also from the same region of the world, South America, was an interesting plant of *Schomburgkia tibicinis*, closely related to the cattleyas and until recently was included in the genus *Laelia*. The plant benched was very well grown carrying a flower stem arising from short hollow pseudobulbs that are the home of vicious biting ants in its natural habitat of Mexico. When these bulbs dry and turn yellow, being hollow, they are used as a type of musical pipe by the local shepherds.

This genus would probably have the longest flower racemes of any genus. The plant brought in had a raceme well over a metre long but in the wild will reach a length of 5 metres. Try getting that to a meeting in a car!!

Some of the other species shown were;

A nicely perfumed *Bifrenaria harrisoniae*. (South America)

A small plant of from Madagascar *Angraecum scottianum*

An attractive little species with the unattractive common name of the Cockroach Orchid, *Restripia elegans*. (South America)

A small plant of the Australian species, *Rhinerrhiza divitaflora*. Known as the Raspy Root Orchid in reference to the rough warty nature of its roots.

An oncidium labelled as *Oncidium leucochilum* but which those present decided it was the hybrid *Onc Sydney*. One of its parents being *Onc leucochilum*.

Each month we see a different gongora this month it was *Gongora truncata*. (South America.)

Also from that continent *Miltonia flavescens*

And from the Island of Sumatra in Asia a well grown species of *Pahiopedilum tonsum*.

Reg Shooter

## November Results List

Ref. No.

Points Awarded

### Open Division

#### Australian native epiphyte hybrid

|     |                         |                                |   |
|-----|-------------------------|--------------------------------|---|
| 574 | Sarco. Cherie 'Charity' | Don & Audrey Biebrick (103)    | 3 |
| 575 | Sarco. Heidi 'Hannan'   | Peter & Geraldine Flavel (487) | 2 |
| 576 | Sarco. Dove             | Bev & John Gay (65)            | 1 |

#### Australian native epiphyte species

|     |                                   |                        |   |
|-----|-----------------------------------|------------------------|---|
| 571 | Sarco. hartmannii                 | Bev & John Gay (65)    | 3 |
| 572 | Dock. (rhinerrhiza x divitiflora) | Geoff & Lucy Spear (5) | 2 |
| 573 | Den. prenticei                    | Malcolm Tiggeman (465) | 1 |

#### Australian native terrestrial species

|     |                            |                   |   |
|-----|----------------------------|-------------------|---|
| 642 | Diuris drumondii 'Buttery' | Malcolm Guy (248) | 3 |
| 643 | Duiris drumondii           | Malcolm Guy (248) | 2 |

#### Cymbidium < 60mm (all colours)

|     |                            |                     |   |
|-----|----------------------------|---------------------|---|
| 586 | Cym. Mad Magic 'Amber'     | Helmuth Gerber (42) | 3 |
| 587 | Cym. Pee Wee               | Bev & John Gay (65) | 2 |
| 588 | Cym. Phar Lap 'Geyserland' | Helmuth Gerber (42) | 1 |

#### Cymbidium 60 - 90 mm (all colours)

|     |                           |                     |   |
|-----|---------------------------|---------------------|---|
| 589 | Cym. Diana Spencer 'Olga' | Helmuth Gerber (42) | 3 |
| 590 | Cym. Mini Brass 'Sheen'   | Helmuth Gerber (42) | 2 |

#### Cymbidium species (any size)

|     |               |                        |   |
|-----|---------------|------------------------|---|
| 644 | Cym. madidum  | Malcolm Guy (248)      | 3 |
| 633 | Cym. lowianum | Helmuth Gerber (42)    | 2 |
| 645 | Cym. madidum  | Malcolm Tiggeman (465) | 1 |

#### Dendrobium (not Aust native) hybrid

|     |                             |                                |   |
|-----|-----------------------------|--------------------------------|---|
| 568 | Den. Tango Queen            | Don & Audrey Biebrick (103)    | 3 |
| 569 | Den. Pixie Princess 'H & R' | Peter & Geraldine Flavel (487) | 2 |
| 570 | Den. Yukidarama 'King'      | Don & Audrey Biebrick (103)    | 1 |

#### Laeliinae Non Standard Cluster

|     |                                    |                                  |   |
|-----|------------------------------------|----------------------------------|---|
| 597 | C. Trick or Treat 'Orange Delight' | Richard & Heather Fishlock (134) | 3 |
| 598 | Lc. Chit Chat 'Tangerine'          | Gerald Voskamp (1650)            | 2 |

#### Laeliinae Non Standard Other

|     |                                  |                             |   |
|-----|----------------------------------|-----------------------------|---|
| 599 | L. canariensis x Blc. Yellow Imp | Bev & John Gay (65)         | 3 |
| 600 | Iwan. Apple Blossom 'Hihimanu'   | Ron & Irene Parish (477)    | 2 |
| 601 | Slc. Jewel Box 'Dark Waters'     | Don & Audrey Biebrick (103) | 1 |

#### Laeliinae species

|     |                         |                                  |   |
|-----|-------------------------|----------------------------------|---|
| 591 | Enc. cardigera 'Sharon' | Richard & Heather Fishlock (134) | 3 |
| 592 | Epi. parkinsonianum     | Peter & Geraldine Flavel (487)   | 2 |
| 593 | C. skinnerii var. Alba  | Ron & Irene Parish (477)         | 1 |

#### Laeliinae Standard < 100mm

|     |                           |                             |   |
|-----|---------------------------|-----------------------------|---|
| 594 | Pot. Shinfong Little Love | Bev & John Gay (65)         | 3 |
| 595 | Slc. Hazel Boyd 'Frue'    | Don & Audrey Biebrick (103) | 2 |

#### Laeliinae Standard > 100MM

|     |                     |                     |   |
|-----|---------------------|---------------------|---|
| 596 | Blc. Adelaide Queen | Bev & John Gay (65) | 3 |
|-----|---------------------|---------------------|---|

#### Oncidiinae hybrid

|     |                       |                                |   |
|-----|-----------------------|--------------------------------|---|
| 607 | Onc. Sydney           | Peter & Geraldine Flavel (487) | 3 |
| 608 | Bllra. Tahamo Glacier | Bev & John Gay (65)            | 2 |

#### Oncidiinae species

|     |                  |                          |   |
|-----|------------------|--------------------------|---|
| 605 | Onc. ampliatum   | Ron & Irene Parish (477) | 3 |
| 606 | Milt. flavescens | Ron & Irene Parish (477) | 2 |

#### Orchid Genera not listed elsewhere - species

|     |                  |                          |   |
|-----|------------------|--------------------------|---|
| 609 | Gga. truncata    | Ron & Irene Parish (477) | 3 |
| 610 | Bif. harrisoniae | Malcolm Tiggeman (465)   | 2 |
| 611 | Bif. harrisoniae | Ron & Irene Parish (477) | 1 |

#### Paphiopedilum Novelty

|     |                                     |                       |   |
|-----|-------------------------------------|-----------------------|---|
| 604 | Paph. [(Gorsej x Sue) x Magic Mood] | Gerald Voskamp (1650) | 3 |
|-----|-------------------------------------|-----------------------|---|

#### Paphiopedilum species

|     |                               |                          |   |
|-----|-------------------------------|--------------------------|---|
| 602 | Paph. tonsum 'Sumartra Giant' | Ron & Irene Parish (477) | 3 |
|-----|-------------------------------|--------------------------|---|

#### Paphiopedilum Standard

|     |                                |                     |   |
|-----|--------------------------------|---------------------|---|
| 603 | Paph. Palisander 'AutumnColor' | Bev & John Gay (65) | 3 |
|-----|--------------------------------|---------------------|---|

#### Phalaenopsis Novelty

|     |                                |                                  |   |
|-----|--------------------------------|----------------------------------|---|
| 580 | Phal. Brother Dendi            | Richard & Heather Fishlock (134) | 3 |
| 581 | Phal. (Brother Fancy x Kaiser) | Richard & Heather Fishlock (134) | 2 |
| 646 | Phal. (Brother Fancy x Kaiser) | Richard & Heather Fishlock (134) | 1 |

#### Phalaenopsis Standard

|     |                                 |                                  |   |
|-----|---------------------------------|----------------------------------|---|
| 577 | Phal. Taisuco Kaaladian         | Richard & Heather Fishlock (134) | 3 |
| 578 | Phal. (Lippstadt x Zamber Rose) | Peter & Geraldine Flavel (487)   | 2 |



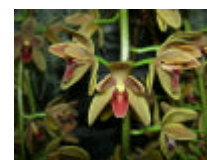
|   |  |                                  |   |
|---|--|----------------------------------|---|
| 579   | Phal. White Dream                        | Richard & Heather Fishlock (134) | 1 |
| <b>Vandaceous Hybrid</b>                            |  |                                  |   |
| 583   | Srts. Toowoomba Sparkle                  | Richard & Heather Fishlock (134) | 3 |
| 584   | Srts. Toowoomba Sparkle                  | Peter & Geraldine Flavel (487)   | 2 |
| 585   | Ascofinetia Cherry Blossom               | Gerald Voskamp (1650)            | 1 |
| <b>Vandaceous Species</b>                           |  |                                  |   |
| 582   | Ang. scottianum                          | Ron & Irene Parish (477)         | 3 |
| <b>Zygopetalum hybrid (inc. intergenerics)</b>      |  |                                  |   |
| 629   | Zcx. Kiwi 'Ripa'                         | Ron & Irene Parish (477)         | 3 |
| 630   | Zga. Adelaide Parklands                  | Peter & Geraldine Flavel (487)   | 2 |
| 631   | Prom. Crawshayana                        | Peter & Geraldine Flavel (487)   | 1 |
| 631   | Milt. flavescens                         | Ron & Irene Parish (477)         | 2 |
| <b>First Division</b>                               |  |                                  |   |
| <b>Australian native epiphyte hybrid</b>            |  |                                  |   |
| 555   | Sarco. Burgundy-on-Ice                   | Terri Rees (50)                  | 3 |
| <b>Australian native epiphyte species</b>           |  |                                  |   |
| 554   | Sarco. hartmannii                        | Terri Rees (50)                  | 3 |
| <b>Cymbidium &lt; 60mm (all colours)</b>            |  |                                  |   |
| 640   | Cym. Cricket 'Rosetta'                   | Rito Silvestri (302)             | 3 |
| 556   | Cym. Pee Wee 'Alcorn'                    | Terri Rees (50)                  | 2 |
| <b>Dendrobium (not Aust native) hybrid</b>          |  |                                  |   |
| 557   | Den. (name unknown)                      | Murray Baulderstone (25)         | 2 |
| <b>Dendrobium (not Aust native) species</b>         |  |                                  |   |
| 558   | Den. pierardii                           | Terri Rees (50)                  | 3 |
| <b>Laeliinae Non Standard Cluster</b>               |  |                                  |   |
| 620   | Lc. Adelaide Ablaze                      | Suzanne Willcox (1481)           | 3 |
| 621   | Lc. Trick or Treat 'Orange Magic'        | Rito Silvestri (302)             | 2 |
| 622   | Lc. Adelaide Ablaze                      | Murray Baulderstone (25)         | 1 |
| <b>Laeliinae Non Standard Other</b>                 |  |                                  |   |
| 623   | Slc. Gold Mine 'Corona'                  | Rito Silvestri (302)             | 3 |
| 624   | Lc. Gold Digger 'Orchidglades Mandarin'  | Suzanne Willcox (1481)           | 2 |
| 628   | Lc. Amazon Trick x Blc. (Jewell Hi       | Murray Baulderstone (25)         | 1 |
| <b>Oncidiinae hybrid</b>                            |  |                                  |   |
| 617   | Dgmra. Starshot 'Vashon'                 | Suzanne Willcox (1481)           | 3 |
| <b>Orchid Genera not listed elsewhere - hybrid</b>  |  |                                  |   |
| 613   | Phrag. Schroederae                       | Merv & Shirley Steele (140)      | 3 |
| <b>Orchid Genera not listed elsewhere - species</b> |  |                                  |   |
| 612   | Bif. harrisoniae                         | Terri Rees (50)                  | 3 |
| <b>Orchid Seedling any genera</b>                   |  |                                  |   |
| 614   | Paph. [Robert Ward x gloriosum x Double  | Suzanne Willcox (1481)           | 3 |
| <b>Paphiopedilum Novelty</b>                        |  |                                  |   |
| 618   | Paph. [Robert Ward x (Gloriosum x Double | Suzanne Willcox (1481)           | 3 |
| 619   | Paph. Monge                              | Merv & Shirley Steele (140)      | 2 |
| <b>Zygopetalum hybrid (inc. intergenerics)</b>      |  |                                  |   |
| 615   | Z. Titanic 'Monarch'                     | Suzanne Willcox (1481)           | 3 |
| 616   | Z. Titanic 'Mark'                        | Murray Baulderstone (25)         | 2 |
| <b>Second Division</b>                              |  |                                  |   |
| <b>Australian native epiphyte hybrid</b>            |  |                                  |   |
| 552   | Sarco. Bernice Klein                     | Wendy Lodge (406)                | 3 |
| 553   | Sarco. Sweetheart                        | Rod & Judy McRedmond (1141)      | 2 |
| <b>Australian native epiphyte species</b>           |  |                                  |   |
| 551   | Den. monophyllum                         | Rod & Judy McRedmond (1141)      | 3 |
| <b>Cymbidium &lt; 60mm (all colours)</b>            |  |                                  |   |
| 560   | Cym. Cricket 'How's That'                | Rod & Judy McRedmond (1141)      | 3 |
| 561   | Cym. Mad Magic 'Amber'                   | Rod & Judy McRedmond (1141)      | 2 |
| 562   | Cym. Plush Canyon 'Queen of Hearts'      | Ruth & Gunter Eckhard (436)      | 1 |
| <b>Cymbidium species (any size)</b>                 |  |                                  |   |
| 559   | Cym. lowianum                            | Ruth & Gunter Eckhard (436)      | 3 |
| <b>Dendrobium (not Aust native) hybrid</b>          |  |                                  |   |
| 563   | Den. Saotome                             | Ruth & Gunter Eckhard (436)      | 3 |
| <b>Laeliinae Non Standard Other</b>                 |  |                                  |   |
| 564   | Epi. (name unknown)                      | Rod & Judy McRedmond (1141)      | 3 |
| <b>Oncidiinae hybrid</b>                            |  |                                  |   |
| 565   | Onc. Sydney                              | Wendy Lodge (406)                | 3 |
| 566   | Mclna. Pagan Lovesong 'Ruby Charles'     | Rod & Judy McRedmond (1141)      | 2 |
| <b>Orchid Seedling any genera</b>                   |  |                                  |   |
| 567   | Disa Diores                              | Peter & Lesley Fenton (473)      | 3 |

## On the Bench at the November Meeting

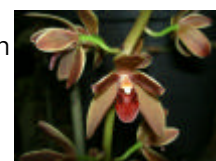
**Flower of Open Division:** The species *Encyclia cordigera* 'Sharon' grown by Heather and Richard Fishlock. A well grown plant with three inflorescences, two with a small branch and one unbranched, each carrying 14, 13 and 10 flowers respectively. The flowers were 50mm wide and 80mm long with narrow dark brown purple on green petals, green at their base. The long pinkish purple labellum was narrow at its base, broadening towards the end. It had three deep purple stripes at its base.



**Flower of First Division and Flower of the Night:** *Cym.* Cricket 'Rosetta' grown by Rito Sylvestri. This very large cleanly grown plant carried 47 many flowered long pendulous inflorescences that were evenly distributed around the pot. The flowers were 30mm wide and 47mm long with green overlaid reddish brown sepals and petals and a solid deep maroon labellum with small orange callus.



**Flower of Second Division:** *Cym.* Cricket 'How's That' benched by Judy and Rod McRedmond. Another well grown plant of this hybrid, a smaller plant with ten attractive pendulous inflorescences. The sepals and petals of the attractive flowers were a slightly darker red-brown on a green base than the flower of the night and the labellum was solid deep red in colour. They were 26mm across and 40mm long.



There were fewer Cymbidiums on the bench again in November and hybrids with the Australian native *Cym. madidum* as one of the parents were well and truly to the fore, *Cym.* Cricket [= *Cym. (devonianum x madidum)*], *Cym.* Pee Wee [*Cym. (madidum x pumilum)*], *Cym.* Mad Magic [= *Cym. (madidum x Tethys)*] and *Cym.* Phar Lap [*Cym. (Flame Hawk x madidum)*].

### A few other plants that caught the eye:

*L. Canariensis x Blc.* Yellow Imp grown by Bev and John Gay. This plant had nicely shaped flowers 97mm high and 110mm across. The sepals and petals were solid bright yellow with a very pale orange blush towards their edges. The well-shaped yellow labellum had short deep red stripes at its base and complimented the rest of the flower.

*Paph.* [Robert Ward x (Gloriosum x Double Deception)], a novelty Paphiopedilum, was benched by Suzanne Willcox. The single flower was 110mm across and 80mm high. The dorsal sepal had red-purple and green striping on a white base, the petals had maroon striping on green which was darker towards the centre of the flower and paler at the ends. The petals also had purple black spotting and hairs along the top edge. The labellum was deep red-purple.

*Disa (veitchii x uniflora)*, was benched by Lesley and Peter Fenton. A striking primary hybrid of the South African terrestrial the genus, the flowers are resupinate ('upside-down' to the orientation of most orchids). The top segment of the flower was light orange-pink with deep pink venation and the two petals were a vibrant mid pink with a purple tinge at their tips.

**Ian Attenborough**

## SEEDLING CYMBIDIUM COMPETITION

Geoff has kindly donated 50 large seedlings of *Cym.* Dorothea Page 'Red Berret' x Wallamura x Yowie Flame

Plants will cost \$5.00 donation to the Club and will be available at the February Meeting  
There will be a \$50.00 prize to the first member to bring a flowering plant to a meeting

**Reserve a plant now**

## Current Sponsors for our Club

We wish to thank the following persons who have supported us and our shows with donations etc. Members are requested to keep these people in mind when purchasing orchids and supplies

Coast FM          David Cammack          Geoff & Lucy Spear          Gordon Brooks  
Helmut Hermann          Jim Shaughnessy          John & Bev Gay  
Moss & Rosemary Bray ( Sims Orchids)          Munns Garden Centre Glandore  
Murray Baulderstone          Noel Oliver          Peter Klose          Richard & Heather Fishlock  
Ron & Irene Parish          Spirit Australia Cruises          Ted & Marjorie Chance  
Valley Orchids          Flagstaff Hotel

### MILES HARPER

HARPER DAVISON - FOR LEGAL ADVICE  
INCLUDING WILLS AND ESTATES  
1<sup>st</sup> free interview for South Coast Orchid Club  
Members  
Phone 8271 0194  
Email - miles@harperdavison.com.au

### Lyttle Orchid Clones

5, Swifte Court Aberfoyle Park SA 5159  
Zygopetalum seedlings in Flask  
Small Flask \$20 Large Flask \$30  
Phone (08) 83818618 Fax ( 08) 8322 7887  
Email: admin@lyttleorchidclones.com.au  
www.lyttleorchidclones.com.au

### Valley Orchids

Lot 8 Wheaton Rd McLaren Vale  
Postal Address P O Box 143 McLaren Vale  
S.A. 5171  
Flowering Season New releases and seed-  
lings  
Open by appointment

Munns Garden Centre Glandore  
Will give South Coast members 10%  
off on all Campbells fertilizers

### South Coast Orchid Club of South Australia Inc

**MARKET SPOT**  
Orchids Australia Magazines \$6.50  
Club Badges \$4.50

### Tom Burian Orchids Lot 25

Heinjus Road, Strathalbyn 5255  
Phone 0412 391 989  
Open Weekends all year around.

### NOEL D OLIVER

Australian Native Orchids  
Dendrobium & Sarcochilus  
Species, Mericlones, Seedlings  
Also Orchid Bark (4 grades)  
Available all year  
**Phone 0884434945 Mobile 0418854034**

**AFFILIATED CLUBS**

Murray Bridge and Districts Orchid Clubs  
Orchid Club of South Australia



**Christmas Greetings**



If unclaimed please return to  
P.O. box 314 Oaklands Park S.A. 5046