



THE SOUTH COAST ORCHID CLUB OF SA INC.

Gazette

February 2024

Patron: Coralie Hills FAOC
President: Michael Willoughby

AT A GLANCE

ANNUAL GENERAL MEETING

The Annual General Meeting of the South Coast Orchid Club of South Australia will be held on Wednesday 7th February 2024 at 8.00 pm. Marion - Warradale Uniting Church Hall, Corner of Township Road and Church Crescent, Marion. Business will include Election of Office Bearers and Committee Members for 2024, and the financial statement for 2023.

The February General Meeting of the Club will follow the Annual General Meeting. Our Guest Speaker will be Jane Higgs who will present "Jane's Orchid Quiz". Come and learn amazing facts about orchids. The meeting will finish a little later than usual at 10.00pm

LEARNERS' GROUP: There will be a Learners' Group Meeting at the February Meeting at 7.15pm. All members are welcome to attend. Bring your problems / plants for discussion.

JUDGING: Please have your plants benched by 7.40pm so Judging can commence at 7.50pm. If you are running late due to work commitments please phone Phil on 0438 891 612.

DAYTIME CHAPTER: The next meeting will be held on Thursday 8th February 2024 at 2.00 pm at the Lou Kesting Hall, off Broadway, South Brighton. Our Guest Speaker will be Bill Jayne speaking on Growing Sarcocilus and then his fertiliser.

SOUTHERN REGION: The next meeting will be held at 2.00 pm on Sunday 18th February 2024 in Carrickalinga House, 17-19 Torrens Street, Victor Harbor. Our Guest Speaker will be Trevor Garrard talking about Phalaenopsis orchids. Bring your notebook to take note of the terrific information that Trevor provides.

LUCKY NAME BADGE: Make sure you wear your Name Badge to meetings, you may win a prize.

PUBLIC LIABILITY: Under Insurance Guidelines all members and Committee attending any function or meeting held by the Club must sign and print your name in an Attendance Book.

DEADLINES FOR NEXT GAZETTES
25 February and 24 March

Website: <http://www.scocsa.net>
E-Mail: scocsa@outlook.com
Address: PO Box 1060, Flagstaff Hill SA 5159
ABN 83 245 384 076





YOUR COMMITTEE FOR 2023

PRESIDENT:	Michael Willoughby	0479 162 527
SENIOR VICE PRESIDENT:	Malcolm Mangelsdorf	
VICE PRESIDENT:	Kevin Western	
TREASURER:	Anne Steer	8270 3090
SECRETARY:	Marilyn Buckerfield	
COMMITTEE:	Oui Ju	
	Richard Crinion	
	Craig Humfrey	
	Phil Steer	
	Carolyn Ponsana	
	Alan Miller	
	Graham Smith	

NON COMMITTEE POSITIONS:		
Registrar	Phil Steer	0438 891 612
Editor	Christine Robertson	0438 363 940
Photographer	Neil Cooper	
Convenor S. R. Group	Chris Heysen	0419 386 769
Convenors Daytime Chapter	Alan Miller	0434 052 676
	Richard Crinion	
	Anne Steer	0418 840 427
Convenor Main Learners Group	Craig Humfrey	

LIFE MEMBERS

* denotes Member who has passed away.

1978 Dulcie Grave *	1986 Harry Viney *	2009 Don Biebrick *
1978 Leora Harvey	1986 John Nicholls *	2009 Henk Van Leuveren *
1978 L. & H. Poole *	1989 Helen Edwards	2010 Dorothy Carassai
1978 Ellie Shaw *	1990 Dr, Keith Northcote *	2011 John and Bev Gay
1979 Syd Monkhouse	2003 Norman Gitsham *	2012 Noel Oliver *
1979 Bernie Hanson *	2005 Merve Steele *	2015 Lesley Fenton
1981 Lois Hanson *	2005 Shirley Steele *	2015 Rod McRedmond
1981 John Leeder*	Circa Tony and Toshi Deonno *	2018 Kevin Western
1985 Brenda Lynch	2007 Ron and Irene Parish	2020 Malcolm Mangelsdorf
1985 Bubs Gready *	2007 Murray Baulderstone *	2021 Donna Meeuwssen
	2008 Geoff and Lucy Spear	

SUBSCRIPTIONS:

Subscriptions for 2024 are now due. There will be no increase in subscriptions for 2024. We do value your membership and seeing you at meetings each month.

RATES – One membership covers all groups

Family Membership	\$38.00
Single Membership	\$30.00
Junior Membership	\$22.00

Rural and Interstate Membership

Family Membership	\$34.00
Single Membership	\$28.00

Account Details: BankSA Glenelg. BSB: 105-145
(Use your grower number for Reference)

Account No.: 545457040



President's Annual Report

2023 for The South Coast Orchid Club was a year where two of the annual shows were held over a weekend instead being staged at shopping centres as we remember, pre COVID-19. The Winter and Spring Shows were held in a new location, the Marion-Warradale Uniting Church Hall, and following the Winter Show in 2022, both were held over a weekend. It was reassuring that these two shows were successful. All of the other South Coast Orchid Club shows were well participated in, and it is nice to see members showing their plants again.

The South Coast Orchid Club participated in The S.A. Orchid Fair 2023 which was held over the June long weekend at the Campbelltown Function Centre. Our Club was successful in winning the Display competition for the second year in succession. This year there was less than a point to decide the overall Display Champion.

Our thoughts are with those members that we lost during the year and their families. They will be missed terribly. Also thoughts are with our members who are unwell and recovering from illness.

Many thanks to Alan Miller, Anne Steer and Richard Crinion for convening the Daytime Chapter in 2023 a job well done and appreciated. There are always interesting plants that have been benched for us all to enjoy. Thank you to our convenors for all your hard work as some of the older members would never miss this meeting.

The Southern Region Group enjoyed another year of well attended meetings convened by Chris Heysen (Many thanks and gratitude to Chris). The Southern Region Group Winter Show was a great success due to the efforts of many of the Southern Regional Group members. It was a great credit to you.

Thank you to all the judges, committee and all members for supporting the club throughout the year. To Phil Steer as Registrar in continuing to do great work for the club, ably supported and assisted by Vicky Cooper in 2023 during Phil's time away from his role. Christine Robertson, our editor, the effort you put into the Gazette is there for all to see and we are most proud of the publication that you deliver for The South Coast Orchid Club of SA. Our Treasurer, Anne Steer for your hard work and continuing efforts throughout this year, our Minute Secretary Marilyn Buckerfield, who did a great job with the minutes, and our committee, thank you for all your work and great organization in 2023.

Finally, I would like to mention all the members who put time into the many jobs that need to be carried out to enable a meeting to go ahead. These include setting up and putting away the hall, the trading table for needed items to grow our orchids, selling raffle and lucky square tickets for much needed fund raising so that we can enjoy our meetings, recording the results of the monthly meetings and setting up supper requirements. Thank you all from the Committee and the members.

2024 brings a return to the first Wednesday of the month for the Main Group Meeting, which will be held at the Marion - Warradale Uniting Church Hall in Marion, which is also the venue of our Winter and Spring Shows.

Finally, I hope that 2024 will be a year that The South Coast Orchid Club of SA can carry on where it left off in 2023, with the members helping and supporting the club as they can. As our club is the members.

May your hobby keep giving you the pleasure that it does me.

Michael Willoughby



ORCHID CALENDAR 2024



ANNUAL GENERAL MEETING

Wednesday 7th February 2024 8.00pm
Marion-Warradale Uniting Church Hall, Cnr Township Road and Church Crescent, Marion

MAIN MEETING

Wednesday 7th February 2024 after AGM
Marion-Warradale Uniting Church Hall, Cnr Township Road and Church Crescent, Marion.
Guest Speaker: Jane Higgs : "Jane's Orchid Quiz" Come and learn some amazing facts about orchids.
Learners' Group Meeting at 7.15 pm

DAYTIME CHAPTER

Thursday 8th February 2024 2.00 pm
Lou Kesting Hall, Off Broadway, South Brighton
Guest Speaker: Bill Jayne: Growing Sarcocylus and his Fertiliser

COMMITTEE MEETING

Wednesday 14th February 2024
The Southern, South Road, St. Marys

SOUTHERN REGION MEETING

Sunday 18th February 2024 2.00 pm
Carrickalinga House, Victor Harbor
Guest Speaker: Trevor Garrard : Phalaenopsis.
Learners' Group Meeting at 1.15 pm

AUTUMN SHOW

Wednesday (Put In) 8th May to Saturday 11th May 2024
Seaford Shopping Centre

SOUTHERN REGION SHOW

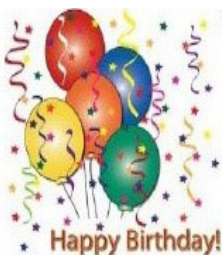
Wednesday (Put In) 21st August to Friday 23rd August 2024
Victor Central Shopping Centre, Victor Harbor

WINTER SHOW

Friday (Put In) 12th July to Sunday 14th July 2024
Marion-Warradale Uniting Church Hall. Cnr Township Rd and Church Crescent, Marion.

SPRING SHOW

Friday (Put In) 20th September to Sunday 22 September 2024
Marion-Warradale Uniting Church Hall. Cnr Township Rd and Church Crescent, Marion.



Happy Birthday

JANUARY

**LUCY SPEAR [90 Years Young] KEVIN WESTERN,
JANE HIGGS, ROWAN CROWHURST, BEV GAY,
ANNE MATTHEWS, GRAHAM LAMBERT,
WARREN YELLAND**

FEBRUARY

**BERYL WILSON, BETH STRONACH, BOB GUNN,
SUE CARTER. RICHARD CRINION, SHIRLEY GREIG,
GEOFF RICHARDSON, SHIRLEY WALLOSCHECK**



Is your name in the Birthday Book ?? See Anne Steer



LUCY SPEAR 90 YEARS YOUNG

Lucy Spear turned 90 on the 18th January this year. We wish her all the best for the coming years.

Lucy was the Secretary of the Club for a great many years and was a tireless worker for the Club. She and Geoff, her husband, love their orchids and still take an active interest in the Club.

HAPPY BIRTHDAY, LUCY

THE LITTLE BLACK ANT, SCALE INSECT, MEALY BUG, APHID ALLIANCE by Ben Wallace



These four groups of insects can work hand-in-glove to make a living at the expense of your orchids. The last three literally suck sap from your plants for their own needs, and produce sugary exudates that ants then feed on. In turn the ants carry the sapsuckers to the choicest localities, such as young emerging leaves, expanding buds or active root tips, where the orchid's nutrient content is at its greatest. Loss of these nutrients from the plant can seriously affect its ability to grow and flower. Worse still, the insects may inject pathogenic viruses into the plant, thereby spelling its doom.

To deal with such a conspiracy requires a multi-pronged response from the grower. First you need to watch where the ants are running to and fro, so that you can discover where their nest is located. If it's in a pot, the nest is easily destroyed. Simply tip the plant and mix onto the soil outside your green house, remove the plant, spread the mix and spray both mix and plant with a mixture of Pest Oil® and pyrethrum. If the ant nest is beneath a concrete slab or in a brick wall, you'll need to use more guile and lay a bait of ant poison. Mortein Ant Sand® is an effective one that has been introduced recently but other types are also available.

Having dealt with the ringleaders, next get the subordinates. Close examination of all plants is important to locate infestations of scale, aphids and mealy bugs. Remember that they often hide in obscure places, such as down in leaf sheath bases, on buried roots and in other hidden spots. Remove all infested plants individually, and spray them with the above-mentioned mix, or use a soft toothbrush to apply it, mixed with detergent. It's important to use some sort of surface-tension breaker (such as a soluble oil, detergent or methylated spirit) to penetrate the waxy coat of some insects. Don't apply more of these chemicals than necessary, as they may damage the plant's softer tissues.

Remember that it's important to deal with all the culprits, not just the sapsuckers doing the immediate damage.



December Results List

Ref. No.

Points Awarded

Open Division

Any Other species

799	Sarco. dilatatus	Kevin Western (155)	3
-----	------------------	---------------------	---

Laeliinae - Non Standard

800	Psh. (baculus x prismatocarpa)	Michael Willoughby & Oui Ju (1252)	3
-----	--------------------------------	------------------------------------	---

Laeliinae - Species

802	Psh. baculus	Michael Willoughby & Oui Ju (1252)	3
-----	--------------	------------------------------------	---

803	Enc. cordigera	Ron & Irene Parish (477)	2
-----	----------------	--------------------------	---

Oncidiinae - Hybrid > 60mm

804	Milt. Rene Komoda	Kevin Western (155)	3
-----	-------------------	---------------------	---

Orchid Genera not listed elsewhere - Hybrid

793	Phrag. Geralda 'Red Ribbons'	Michael Willoughby & Oui Ju (1252)	3
-----	------------------------------	------------------------------------	---

794	Aerides. krabiense x Asco. Peggy Soo	Ron & Irene Parish (477)	2
-----	--------------------------------------	--------------------------	---

795	Disa Unicol 'Illegitimacy'	Kevin Western (155)	1
-----	----------------------------	---------------------	---

Orchid Genera not listed elsewhere - Species

796	Coel. pandurata	Ron & Irene Parish (477)	3
-----	-----------------	--------------------------	---

797	Renanthera monachica	Ron & Irene Parish (477)	2
-----	----------------------	--------------------------	---

798	Masd. ignea 'Francis'	Kevin Western (155)	1
-----	-----------------------	---------------------	---

Paphiopedilum - Non Standard

805	Paph. Berenice 'Dee Pee'	Michael Willoughby & Oui Ju (1252)	3
-----	--------------------------	------------------------------------	---

Paphiopedilum - Species

806	Paph. hirsutissimum var. esquirola	Michael Willoughby & Oui Ju (1252)	3
-----	------------------------------------	------------------------------------	---

First Division

Cymbidium 60 - 90mm All colours in Non-std

791	Cym. Kiwi Devonport 'Flying High'	Laurie & Susan Carter (1303)	3
-----	-----------------------------------	------------------------------	---

Cymbidium over 90mm All colours inc Non-std

790	Cym. Rothesay 'Butterfly'	Laurie & Susan Carter (1303)	3
-----	---------------------------	------------------------------	---

Cymbidium under 60 All Colours inc Non-std

792	Cym. Parish Laird x Last Tango	Laurie & Susan Carter (1303)	3
-----	--------------------------------	------------------------------	---

Laeliinae - Non Standard

786	Epi. Pacific Whimsey	Peter Haltis (442)	3
-----	----------------------	--------------------	---

787	C. Scheherazade	Peter Haltis (442)	2
-----	-----------------	--------------------	---

788	Epi. Pacific Rumours	Peter Haltis (442)	1
-----	----------------------	--------------------	---

Laeliinae - Species

789	Psh. cochleata	Laurie & Susan Carter (1303)	3
-----	----------------	------------------------------	---

Oncidiinae - Hybrid > 60mm

785	Mps. Princess Diana 'Red Baron'	Beth Stronach (836)	3
-----	---------------------------------	---------------------	---

Orchid Genera not listed elsewhere - Species

782	Aslla. africana	Laurie & Susan Carter (1303)	3
-----	-----------------	------------------------------	---

783	Bif. harrisoniae	Laurie & Susan Carter (1303)	2
-----	------------------	------------------------------	---

Specimen Species or Hybrid

784	Aslla. africana	Laurie & Susan Carter (1303)	3
-----	-----------------	------------------------------	---

Second Division

Oncidiinae - Hybrid > 60mm

778	Mps. Princess Diana 'Red Baron'	John Harris (26)	3
-----	---------------------------------	------------------	---

Orchid Genera not listed elsewhere - Hybrid

779	Phal. Unknown	Graham & Janette Smith (217)	3
-----	---------------	------------------------------	---

781	Phal. Unknown	Coral Tillmanns (212)	1
-----	---------------	-----------------------	---



SEEDLING OF THE NIGHT

Psh. cochleata

Grown by Laurie & Sue Carter

Photo Neil Cooper

PLANT COMMENTARY – DECEMBER 2023

There were a good number of plants benched across all divisions and it was pleasing to see to finish off the year.

Orchid of Open Division & Plant of the Night

The plant that was selected for Open Division was *Paph.* Berenice 'Dee Pee' grown by Michael Willoughby and Oui Ju.

The plant was carrying two inflorescences with one having four flowers and a bud and the other carrying three flowers and a bud. Very attractive flowers with multiple contrasting colours with the dorsal having brown striping on a green/grey background to the tan pouch with the long purplish furling segments.

Paph. Berenice is a primary hybrid and comprises 50% each of *Paph. lowii* and *Paph. philippinense*. Truly an eye catching plant and very well grown.

Well done Michael & Oui.



Orchid of Open Division
***Paph.* Berenice 'Dee Pee'**
 Grown by
 Michael Willoughby & Oui Ju
 Photos Neil Cooper



Orchid of Second Division
***Mps.* Princess Diana 'Red Baron'**
 Grown by John Harris
 Photo Neil Cooper

Orchid of Second Division

The plant chosen by the Judges was grown by John Harris and was a lovely *Miltoniopsis* Princess Diana 'Red Baron'.

This was only a small plant growing very happily on a mount and was carrying three gorgeous flowers of varying shades of pink through to Burgundy on the upper segments with a bright central yellow mask around the pollinae. The shape was excellent and the flowers were clean and fresh.

Congratulations John.

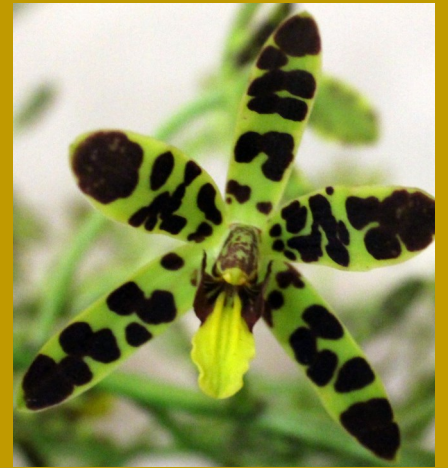
PLANT COMMENTARY – DECEMBER 2023 cont ...

Orchid of First Division

The plant of First Division was grown by Laurie and Sue Carter and was *Ansellia africana*.

This plant had multiple spikes of lovely flowers of a green background with dark brown blotches on all segments and a contrasting yellow labellum. There were still a number of flowers to open so it would be quite a spectacle when they are all open. It seems that this year has been a good flowering season for this genera.

Well done Laurie & Sue.



Orchid of First Division *Ansellia africana*

Grown by
Laurie and Sue Carter
Photos by Neil Cooper

Thank you to our Judges for a job well done!
Good Growing !

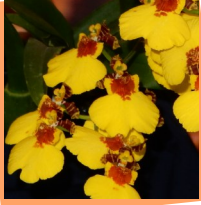
Phil Steer
REGISTRAR



WAINS' ORCHID EXCELLENCE FERTILIZER

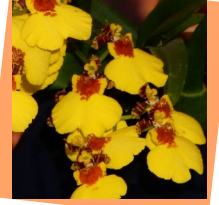
1 Litre pack Part A and Part B
\$25
2.5 Litre pack Part A and Part B
\$45

If you wish to order please
contact Bill Jayne on
0419 039 022



DAYTIME CHAPTER

Thursday 14th December 2023



Hi everyone,

The December meeting of the Daytime Chapter was held at the Morphet Arms Hotel for our Christmas breakup luncheon. The 18 Members who attended had a great time.

Our guest speaker for our February meeting will be Bill Jayne speaking on Growing *Sarcocylus*. He will also introduce us to Wains' Orchid Excellence Fertilizers. So don't miss this informative session.

Phil Steer will show us the Flower of the Year presentation. Members will be able to vote for their favourite flower.

Please bring along your flowering plants to display for our members to enjoy.

After the meeting, stay and share afternoon tea with us.

Being Summer, a reminder that we have a hot weather policy. If the forecast on the 7pm ABC News is for 35 degrees and over for the day of the meeting, then the meeting is cancelled. The hall can be very hot although some cooling has been installed. If you are not sure if the meeting is on, phone to check.

NOTE; Even if you generally attend the Main or Southern Region Meetings, the Daytime Guest Speakers are often different. You are most welcome to attend.

Next Meeting : Thursday February 8th - 2.00pm

Lou Kesting Hall. Broadway, South Brighton

**Guest Speaker: Bill Jayne on *Sarcocylus* and
fertilisers**

Alan Miller

0434052676

Richard Crinion

Anne Steer

LEARNERS' GROUPS

Prior to the Main Meeting and the Southern Region Group Meeting there is a Learners' Group meeting. These meetings are designed for members to bring their problems with their plants for discussion. And also bring along plants for comments on them. Are you excited about something that has happened? Have you done something that really works?

You do not have to be a beginner to attend. They are open to all members. Come along and listen or contribute your knowledge. You will learn a lot, help someone else with a problem, and make new friends.



SOUTHERN REGION MEETING Sunday 17th December 2023

Prior to the meeting, and in lieu of our normal Learners group, we had a Christmas social with members contributing a plate. This was a great opportunity for everyone to relax together and enjoy a convivial occasion. Thanks to all for your contributions.

Convenor, Chris Heysen, opened the main meeting at 2.00 pm welcoming the 21 members present. And welcome to our guest speaker our own Phil Steer, who will be talking about the Horsham Orchid Show.

Apologies: Dianne Cawley, John and Bev Gay, Bob Clayton and Elsie Clifford. Elsie had a fall while walking on the beach and has broken her femur! She was in Calvary for a while but is now in rehab and doing well.

Guest Speaker: Our Guest Speaker, Phil Steer, gave us a fascinating presentation on the Horsham Orchid Show. For a town not much bigger in population than Victor Harbor they have a very active orchid community with many excellent displays and a wide range of genera on show. This is definitely a show to keep in mind for a visit in the future. Many thanks Phil.

Birthday Prize: Alan Clayton

Lucky Name Badge: Andrew Craig

Lucky Door Prize: Marg Yelland

Announcements:

Anne thanked everyone for their support during the year.

Chris thanked everyone who contributed to the pre.meeting social and suggested that we should do this more often. Eileen suggested we could have a "Christmas in July" which was readily agreed by all.

The raffle was held as usual and Chris thanked the donors of raffle prizes.

Judging: was carried out by the Registrar Phil Steer and Jane and Don Higgs.

Judges Commentary: Phil Steer.

Anne's Christmas Quiz: Once again this year Anne had arranged a quiz with Christmas themed questions – the first person with the correct answer to each question picked a prize from a box of gifts provided by the club. One prize per person. Thank you Anne for arranging this!

Kris Kringle: There was a table full of interesting gifts for the Kris Kringle. Well done to all the members who participated!

This is our last meeting for the year. Many thanks to all our helpers who enable us to run successfully through the year. To Anne and Phil Steer from the main club in Adelaide; to Christine, Dianne, and Elsie for the vital roles they play; and to our judges Don & Jane. And thanks too to Dudley and the rest of the team who help set up and take down the hall here for each meeting. Thank you all – and Merry Christmas and a safe and Happy New Year! This has been a tough year for a whole lot of people – both close to home and around the world. Let's hope that 2024 is a whole lot better than the year just gone!

The meeting closed at 3:45pm and was followed by everyone joining in to share a cuppa and a selection of cakes and cakes and biscuits.

Next meeting – Sunday 18th February 2024.

Guest speaker will be Trevor Garrard who will be talking about Phalaenopsis. Trevor is an experienced Phally grower and breeder. Bring a note book – there will be lots of useful information.

Chris Heysen
0419 386 769

Southern Region December Results List

Ref. No.		Points Awarded
First Division		
Australian Native Epiphyte - Species		
495	Cym. canaliculatum Genny & Dudley Huxtable (279)	3
Laeliinae - Non Standard		
496	Williamcookara Bill Genny & Dudley Huxtable (279)	3
Oncidiinae - Hybrid < 60mm		
498	Onc. Sunny Daze 'Hilo Bay' Chris and Lyn Heysen (1140)	3
Oncidiinae - Hybrid > 60mm		
497	Onc. Sunny Daze Chris and Lyn Heysen (1140)	3
Orchid Genera not listed elsewhere - Species		
499	Bif. tyrianthina Eileen Pinnock (519)	3
Second Division		
Cymbidium 60 - 90mm All colours in Non-std		
493	Cym. Pathfinder 'Softly Softly' Alan Clayton (426)	3
Orchid Genera not listed elsewhere - Hybrid		
494	Phal Unknown Heather McDonald & Ruth Creedy (300)	3

VALE JOHN ROBINSON

12/9/1934 – 2/7/2022 Died on 2 July 2022 aged 87

It is with regret that we learn of the passing of John Robinson. John was a Secondary teacher at Hamilton Secondary School for many years and played for the Glenelg Football Club. He was one of just 18 Greats of Glenelg, the highest honour the club can bestow on its players or officials.

John was a Cymbidium grower and a very active member of the SCOCSA for many years. He was always willing to share and pass on growing tips to members.

Rest in peace John



SOUTHERN REGION PLANT COMMENTARY

This month saw a small number of plants to finish off the year. Still a nice cross section of plants of good quality.

Orchid of Second Division

The plant chosen by the Judges was a lovely Cymbidium, *Cym. Pathfinder* 'Softly Softly' grown by Alan Clayton.

A small plant carrying one spike of cream flowers with a contrasting white and mottled red labellum.

Congratulations Alan.

ORCHID OF SECOND DIVISION *Cym. Pathfinder* 'Softly Softly'

Grown By Alan Clayton
Photo Jane Higgs



Orchid of First Division Orchid of the Day

The plant of First Division was grown by Genny & Dudley Huxtable and was a lovely plant of *Williamcookara* Bill.

This plant is a complex hybrid in the Laeliinae family and comprises *Broughtonia* x *Cattleya* x *Caularthron* x *Laelia* in its background. Interestingly it has been awarded on three occasions in the USA.

The flowers were a lovely shade of mauvish pink with some splash of white around the central parts of the segments. Certainly not a big plant but still very attractive.

Congratulations Genny & Dudley.



ORCHID OF FIRST DIVISION PLANT OF THE DAY

Williamcookara Bill

Grown By Genny & Dudley Huxtable
Photo Jane Higgs

Thank you to our Judges, Jane & Don for a job well done!

Good Growing!

Phil Steer
Registrar



Orchid Culture Notes for February

It's the start of another year in the orchid house. This year we have been dealt very varied weather ranging from baking and orchid killing 40°C plus heat to high humidity and high winds and then cooler days but scant rain. A normal cycle should start soon ?? and as the saying goes, it will get hot when the kids go back to school. Note that any heat damage will come out over the next few weeks with leaf marks becoming more evident and leaf drop occurring. The recent humidity will create some fungal issues in the shade house as well, so keep an eye out for any outbreaks and have some fungicide ready in case. Heat damaged plants with damaged leaves and stress are prime targets for pest and disease attack. The physical side of heat damage is easy to spot but remember that heat also damages the plants roots as well. Black pots exposed to the sun overheat and cook the roots. Whilst the top of the plant may come through ok, underneath things are not so good. Then sometime later the plants start to shrivel as they do no longer have a functioning root system. Most of us will put down root loss to poor culture such as over watering or a broken down mix. Just remember, heat can be added to this. Even slugs and snails will be in good numbers awakened by the sudden change in weather.

February is usually the hottest month and with it often comes an increase in the intensity of the north winds, so there is much heat left for us yet. In fact you can still have temperatures nudging the old 100 degree mark as late as the equinox.

I said earlier on that prevention is a key if we are to avoid damage to our plants. It's no use after the event. I have learnt from previous heat events those plants that struggle, and I have provided them with the additional support they needed this time round. The result was only a very small number of plants suffered any damage and there were no losses. Same rules apply to pests. Spray when the moths are active for caterpillars for example. By the time their crop of loopers has started chomping on your orchids half the damage has been done. Get them as they hatch. When the rain stops inspect the orchid house and surrounds for slugs and snails. Be prepared for the next heat event. For some of us, be it age, disability, size of orchid house, whatever, we cannot go to extraordinary lengths to save our plants from the heat but there are some ideas that may lessen the damage. Humidity is your ally and keeping it up high will help. Wet the floors as often as you need to on extreme days. We have two large rubbish bins full of grey water for this purpose. Just don't water the orchids with it but using it for splashing on the shade house sides and floor is a better option than tipping it down the drain. Extra shade will help reduce burning caused by intense light. It will not reduce the damage caused by heat. A wet floor or sides of the shade house will evaporate water. With evaporation there is a release of latent heat. The air cools. Wet your hand and blow on it....it feels cool!

Basically, shade reduces damage by light and the humidity reduces damage by heat. For those with 50% shade cloth, especially the white one the damage this year would have been severe. It's looking like the extreme heat we have experienced the past couple of years may be with us for good each summer. A secondary layer of shade we can roll out over the base layer for a few days whilst the heat is at its worst may become a required item. Otherwise we may have to rethink colours. Of course aspect and location will also have a bearing. My area is very open, no trees or neighbours to shade my yard, so I have to make allowances for that.

Another thing is that we may be forced to stop growing genera that can't handle the heat and concentrate on those that are heat tolerant. My hot house for example apart from foggies has nothing to control the temperature so now only the hard cane Dendrobiums, Cattleyas and a few of the more tolerant Oncidiums spend summer in there, for everything else it is too hot. I have lost some of the real cool growing stuff that I won't replace until I can provide the artificial conditions to keep the temps below 30 all year round.



Orchid Culture Notes for February cont..

Enough of the doom and gloom. Autumn is coming! But it is not here yet. The obvious task is to keep plants moist and ensure all pots are checked regularly to make sure all plants are getting enough water. I lift and feel my pots occasionally. With practice you can tell by the weight of the pot whether or not it is dry. The old finger in the mix test works to test for moisture and of course we can buy moisture meters. By now many genera are completing their growth stage and will be in the process of maturing their growths. Some in readiness for immediate flowering over the autumn and others for winter and spring. These maturing plants should have their diet changed to one with a higher potassium content to help mature the plant as well as strengthen the raceme and improve the colours.

Might be a good idea to look at the presentation of these plans and start working on them now. For example I have a nice *C. Hawaiian Wedding Song* with several new growths all over the place in the pot. They are in sheath but not yet filling out with buds. If I leave it too long the presentation will be like a dogs breakfast and if I try and fix it too late then there is risk to the blooms so I work on it now to straighten the growths up and get them spaced correctly around the pot.

Spraying with a stress guard type preparation is also beneficial as these products reduce the amount of evaporation through transpiration. You will not stop the damage completely but a bit of forethought and action will lessen the damage.

Lets have a look around and see what's on in the shade house this month. By now our autumn flowering *Laeliniiae* complex (*Cattleyas* and *Laelia*'s) will have rapidly maturing growths and some already showing emerging spikes. Make sure these spikes and growths are well supported with a stake. Keep water out of the sheaths to avoid fungal rots and spots and make sure the snail baits are on the pot. It often rains this month and it will wake up those slimey fellows. Keep well watered so the spikes remain plump. As some of these developing spikes will excrete a sugary substance you will find ants will be attracted to the spike. They can do a lot of damage as they will eat into the developing spike and they usually bring in a few soft scales as well. Extreme weather can cause buds to abort so bring them inside if it gets real hot (or unseasonably cold) at this stage of initiation.

Oncidiums as a rule will be filling out their pseudobulbs and the odd spike or two will be starting to show. Similar culture to the *Laeliniiae* complex should apply. For those with terrestrials this is the last month for re potting. Still aim to keep them on the dry side after re potting as the disturbance of re potting plus being too eager with hose will have them out too early. Wait till the cooler weather in April for this although there will be early varieties flowering in March. Like any orchid, a knowledge of the species itself or that in the hybrid is important when determining what needs to be done and when.

Native epiphyte growths as usual are all over the place. I even had 2 *Den. speciosum* flower in January. (note *Den. speciosum* var. *capricornicum* can flower very early in the year but these are not that variety) Some are maturing yet others are only buds. As a rule keep the water and feeding up. Watch out for caterpillars as they love new soft growths. Many will have a burnt leaf tip or spot. Leave them until the leaf matures before trimming them. Inspect the new growths and if they are floppy then some part of your culture is not quite right. Too much shade and high nitrogen in the feed are the two main culprits. Don't move them yet to a brighter place as they will burn. Leave that to April. They still may flower in spring.

Zygopetalums will have new growths maturing and evidence of new growths will be evident from the base of these maturing ones signal the start of a new flowering season. Keep moist, feed with a balanced to high potassium based feed and watch out for loopers, especially

Orchid Culture Notes for February cont..

on the undersides of the leaves. They don't eat through, rather they skeletonise the leaf and when that dries looks rather unsightly. A spotted, half eaten Zygo on the show bench doesn't have that appeal. Again place a few snail pellets on the surface of the pot.

Keep Paphiopedilums moist and keep an eye out for mealy bugs. High humidity and fresh air movement is important this time of year. Keep light levels fairly low. As a rule hold your hand about 12 inches above the plant and you should only just see a slight shadow. Full shadow too much light, no shadow a bit dark. This is only a rule of thumb for newer growers of this genus. Feeding is usually a balanced feed at half or less of the manufacturer's recommendations. If you can, try and flush your Paphs out occasionally with rainwater to remove salt build up from tap water and fertiliser. Adelaide water is loaded with extra salt over the summer. They will love you for it. A flush is usually two or three waters say an hour apart. The first softens and dissolves some of the salts, the second and third gets the rest. Collect the waste water and use that to wet your floors later when it's hot.

For other genera it's a matter of treating them in accordance with their growth habits although in most cases they will be in a growth mode.

February is a dry month on the show bench and apart from a few plants there won't be much else out. Even with my collection, finding enough to show will be difficult, even more with many that have flowered showing the affects of the heat. Bring in what you can. If it has a burn or a spot I am sure your plant won't be alone.

February will end and the extreme heat of summer maybe a couple of weeks later. March will be upon us and with it those cooler nights. Most of our plants will survive this summer and we need to be a little more caring to see them through it and help in the recovery stakes.

Steve Howard

Dipodium roseum

The deciduous terrestrials are seasonally leafless and are pan tropical and the leafless saprophytes are not in cultivation mainly due to mycorrhizal specialities.

Dipodium roseum is a local Adelaide Hills (South Australia) example of a leafless saprophyte that grows in association with mycorrhiza from the local stringy bark tree roots. It grows in woodland and open heath forest. It blooms in Summer with 9 cm long several to

many flowered inflorescences with successively opening flowers .



ORCHID CLUBS IN SOUTH AUSTRALIA **General Meeting Times**

THE SOUTH COAST ORCHID CLUB OF SOUTH AUSTRALIA: In 2024, the Club will meet at the Marion - Warradale Uniting Church Hall, Cnr. Township Road and Church Crescent, Marion. at 8.00p.m. on the first Wednesday of the Month

THE DAYTIME CHAPTER: meets at the Lou Kesting Hall, off Broadway, South Brighton on the second Thursday of the month at 2.00p.m.

THE SOUTHERN REGION: meets at Carrickalinga House, 17-19 Torrens Street, Victor Harbor at 2.00p.m. on the 3rd Sunday of the month.

THE ORCHID CLUB OF SOUTH AUSTRALIA: meets at 8pm in The Enfield Community Centre, 540 Regency Road, Enfield on the 1st Thursday of the month.

Daytime Group: meets from 2.00p.m. to 4.00p.m. in the Enfield Community Centre, 540 Regency Road, Enfield on the 2nd Friday of the month.

THE MURRAY BRIDGE AND DISTRICT ORCHID CLUB: meets at 1.45pm in the Seventh Day Adventist Hall, corner Myall Avenue and Standen Street, Murray Bridge on the 4th Sunday of the month.

THE SOUTH AUSTRALIAN ORCHIDACEOUS SOCIETY: Meets at the Plympton Community Centre, 34 Long Street, Plympton from 7.30p.m. on the 3rd Wednesday of the month.

THE NATIVE ORCHID SOCIETY OF SOUTH AUSTRALIA: meets at 7.30p.m. at St. Matthew's Church Hall, Bridge Street, Kensington on the 4th Tuesday of the month.

THE CYMBIDIUM CLUB OF SOUTH AUSTRALIA: Meets at 7.30p.m. at Burnside Community Centre, 401 Greenhill Road, Tasmore on the 4th Wednesday of the month.

Our Affiliated Clubs:

The Murray Bridge and Districts Orchid Club.

The Orchid Club of S.A. Inc.



AFFILIATED CLUBS

Murray Bridge and District Orchid Club Inc.
Orchid Club of South Australia

If unclaimed please return to
P.O. Box 1060 Flagstaff Hill S.A. 5159



**People who submit articles to the Club for inclusion in our Gazette express
opinions which are not necessarily those of the Club.
No guarantee is provided to anyone using the ideas & opinions expressed in
these articles.
Items must be delivered to the Editor by the second Thursday of each month.**