



The South Coast Orchid Club Inc. Gazette

July 1997

PRESIDENT

H.J. Edwards
33 Oliphant Ave
MARION SA 5043
Phone: 8298 6689

SECRETARY

P. O'Brien
6 Culver St
STURT SA 5047
Phone: 8298 3773

TREASURER

G. Shevlin
22 Australian Ave
CLOVELLY PARK SA 5042
Phone: 8276 7652

NEXT MEETING:

July 8th 1997 Calvary Lutheran Church Hall, Windsong Crt, Morphett Vale. Benching of plants to be completed by 7-45 pm for judging. Meeting commences at 8pm.

GUEST SPEAKER:

Mr Kevin Hendreck will address the Meeting. His subject will be Potting Mixes.

HALL SET-UP:

Members willing to help please be at the Hall by 7pm.

SUPPER:

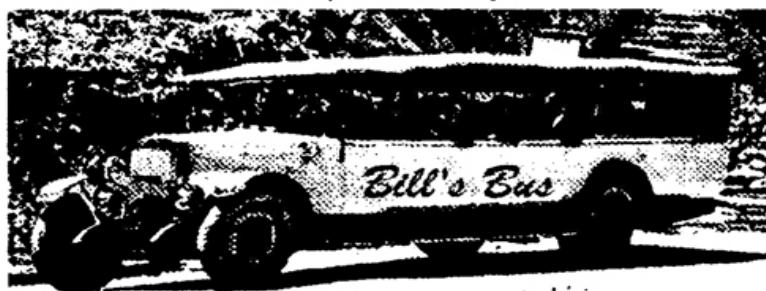
Tea, coffee and cordial will be provided .

DAYTIME GROUP:

2pm. Thursday 10th July 1997 at South Brighton Community Hall, Dover Square Reserve, Broadway, South Brighton. Smoult's Mobile Horticultural Suppliers will bring goodies to demonstrate and sell.

WINTER SHOW:

Labels for Show and sale plants available at the July meeting. Set-up for Show from 9.00am on Friday 18th July at Pioneer Hall, cnr Morphett and Sturt Roads Marion. Plants for Judging to be benched in displays by 6.45pm. Presentation of Sashes to Champions 3.45pm Sunday 20th. Takeout after 4.00pm Sunday.



DAYTIME GROUP

On a rather chilly day Lesley welcomed 32 growers to the meeting. Condolences were extended to Eva Soar.

Lesley gave a resume of the weekend trip to the South-east then introduced the guest speaker, John Gay.

John's subject was - Orchids to grow Cold.

The program commenced with slides-

Cymbidium pumilum,

Cymbidium devonianum

and the Australian species *Cymbidium canaliculatum* with its channelled leaves. All these species have been used in varying degrees in hybridizing and will grow cold.

Cym. Pinafore Comet is an early intermediate that is very floriferous and always manages to present itself well.

Ansellia concolor is another species, this time from Africa, that John grows hanging over the *Cymbidiums*.

Many of the *epidendrums* grow cold, especially the reed stems.

Stenoglottis longifolia is becoming a very popular terrestrial species in SA. This progressive flowerer is a gross feeder.

The Australian native dendrobium hybrids including Den. Ellen, and the species *aemulum*, all do well grown cold with the cym.

Another orchid to hang over the cym is the *Stanhopea* family. They need to be grown in open baskets lined with fibre or spagnum moss so the flowers can come out the bottom of the basket. If you miss the buds on these you won't miss the flowers as the pleasant perfume can be smelt from quite distance.

Paphiopedilum callosum, *sukhakulii*, and *Convetti* grow cold in an area with 'plastic' roof and sides. (flowering house)

Sophronitis grandifolia, with its small growth and large flowers is rather eye-catching and doesn't mind the cold.

Sartylis Blue Knob, a *sarcochilus x rhyncostylis* hybrid also requires no heat.

John grows many of his *cattleyas* cold, but in winter they may need to have a roof for protection.

Cattleya Lyn Spencer and C. Chocolate Drop are two that do quite nicely.

Pleiones are another genus that grow cold. These

little beauties are dormant in Winter and come into growth in September/October.

Some of the so-called Indian *dendrobiums* will grow and flower under shadehouse conditions. John showed *Den. thrysiflorum* flowering beautifully.

The Australian Terrestrials have a roof over the top in winter so that the water can be controlled. John's flowering house is actually 2c warmer than outside and that still amounts to some pretty cold nights in winter.

Many of the *oncidiums* grow in the shadehouse and are put under cover when the spikes appear. Soft cane *dendrobiums* can be hung up high. The idea is to get them to grow quickly in Summer but in Winter (from Anzac Day onwards) restrict the watering to encourage flowers.

The *zygopetalums* will grow quite happily with the *cymbidiums* but like a little more shelter.

If you're looking for something different and it hasn't been mentioned yet what about *Ascofinetia* Cherry Blossum. This small flowering hybrid between *Neofinetia falcata* and *Ascocentrum ampullaceum* is a little gem. It was registered way back in 1961 but isn't seen very much.

John's pick of the plants on the bench was *Zygopetalum mackayi* grown by Lloyd Cox.

Members were a little more undecided with the Zygo. 1st but Keith Northcote's *Calanthe* and *Cattleya* Portia 'Monty', John & Bev. Gay's Blc. Adelaide Silver, Lesley & Peter Fenton's *L. anceps* and Helen Edwards *Beallara* all polling well.

A very interesting meeting concluded with a cuppa and biscuits.

DAY TRIP

Members wishing to go on the trip to Nicky's and Guest's Orchids please pay \$18 at the July meeting.

COMPETITION PLANTS

Some of the plants that were distributed to Members in 1994 are flowering. Although the competition is over we would love to see any of the flowering plants at the Monthly meeting.



“HAVE A GOOD DAY”, OR SHOULD WE SAY “HAVE A GOOD LONG WEEKEND”. by Graham Shevlin

Nothing like a 7am start - well some people think there's nothing like it anyway. As I am not attuned to this hour, I'm a bit vaguer than usual, so the reader must assume we met at Marion Shopping Centre - boarded the bus, and hit the road. Some distorted memories of us stopping and a walking beanie hat coming on board accompanied by his entourage (subsequently turned out to be Darcy and Jeannie Bloomfield and Richard and Heather Fishlock from some strange place called OCSA.) Somehow another pair had infiltrated our bus, they were called the Smiths. I dread to think where they came from, something called NOSSA.

Arriving at Coonalpyn we pulled over for morning tea, no hurricane lamp was required now, and Lesley and her helpers were arranging morning tea. Tea/coffee/cordial/home made cakes/biscuits/etc/etc. Back into the bus pushing on to Naracoorte, this part of the trip was fairly uneventful if you could call uneventful Lesley running up and down the aisle conducting numerous raffles, quizzes and distributing sweets. Arriving at the Naracoorte Caves we witnessed a World first. The Park rangers have installed

video cameras and infra red lighting (put simply we could view the caves deep down and look at the bats in their natural habitat without disturbing them, regrettably in black and white). It was not all sitting down in armchairs and viewing on a screen, we did descend partially into one of the caves and looked at the various stalagmites and stalactite structures. Having walked off morning tea Robert Wood's team, from Millicent Orchid Club, got into gear and cooked us a sausage sizzle, the weather was holding well and lunch under the gumtrees was very enjoyable. On we went stopping very briefly at a wood-turning display, saw a large gavel, the business end was about 20cm in diameter and a beautifully turned handle about a metre and half long (I saw a glint in Charlie's eyes) I put it to the committee that we should purchase it, but they were not prepared to. I just thought this would bring the Club

into line.

On to Millicent - Hospitality plus, first to the home of Bev where we were treated to afternoon tea. Tea/coffee/creamcakes/cream scones/biscuits/etc/etc and more cream cakes, she also grows orchids (two reasonable size shade-houses) and does beautiful home craft work, in her spare time. Our thanks to you.

Moving on to Janet's, an interesting collection of mixed genera orchids were viewed, and a table full of recently divided orchids for the taking - we thank you sincerely. Lastly to Ann and Ben's, we viewed what a very energetic couple can achieve, bird aeries, orchid houses, sundry animals, the start of gardens and picnic areas etc. There must be 50+ walk-in cages. Birds ranging from local parrots to the exotic. Ann and Ben have submitted plants to the Coun-

cil to open the area up as a Tourist Attraction, best of luck to you both. Night-time approaching, on to the bus, back to Millicent, check into the Diplomat Motel—Oh no, nothing like an early night (shower, change, whatever) onto the Bamboo Restaurant, you guessed it, a Chinese Banquet, (one of the best I have ever had) of course our hosts joined us, thanks all round. Great night.

Reveille (I don't know what time) but had to be assembled by 8am, the bus left 8.001. On to the Waterfall Gardens "Magnificent" (walking of course being the operative word, or should I say mountain climbing), treated to morning tea. Moving onto Warnambool to Philip Altmann's Nursery. On arrival a sausage sizzle had been prepared by the Nursery followed by Choc cake/ Sultana cake, again courtesy of Lesley. And then some serious shopping at the Nursery (would have made a supermarket owner cry). Back on the bus, by this time it was starting to look like a large styrene box with a motor and wheels attached to it, with orchids sticking out everywhere, I would not like the local

constabulary to check on us. Ho, Ho I later learned the local constabulary was on board, in fact our guide at that stage. (Jim Shaunessy had more than filled that job for most of the day). Passing through what looked like Sherwood Forest our guide ordered Driver Bill to pull over forthwith. Striding out he said, "Good citizen Jim Hartley lives just in there, and I'm sure if I go and see him and explain a few of us are just on a Sunday afternoon drive he would be only too happy for one or two of us to go in and look at his shadehouses", returning he said, "Jim, and his wife Lorna, would be delighted". 34 of us trooped in - what a spectacle. After a lot of questions (Jim happens to be one of those very innovative people) a few purchases and with the use of a ram rod we settled down in the bus again. Arriving back at Mount Gambier we cruised around the town looking for a fertilizer shop, eventually we settled on the R.S.L., they have built a very smart dining room - excellent food, back to Millicent, arrival time about 9.30. Good Night.

Monday morning 9am start - 1/2 hour out of Millicent heading towards the coast gambling under way again with a raffle and some puzzles devised by Lesley and of course your choice of sweets. Along the coast road stopping to look at the coastal scenery here and there, turning inland we stopped by a small lake and again the wizard of gastronomical delights produced morning tea / The usual tea etc/etc/etc. Leaving the lake we stopped at Woakwine Cutting, this is a channel 1 kilometre long 37 metres deep, dug by 2 men with the use of a tractor and a gouger affair and the aid of a little dynamite, dug in 3 years, the purpose to drain the land beyond the hills, quite a remarkable feat. On to Robe, lunched here,

looked around the town then we headed off to Meningie. Just before Meningie there is a cry "Hey there is the local fish and chip shop" on the side of the road, in the middle of nowhere on the corner of a vacant paddock was a tin shed with the sign on it 'Fresh Fish'. The bus groaned to a stop where some of our fishy people alighted and made appropriate purchases of fish. (They do make fertilizer out of fish don't they?) On the road again to Taillem Bend (petrol stop etc).

The final leg back to Adelaide arriving 6-30pm.



ORCHIDS WHERE YOU LEAST EXPECT THEM

by H. Fishlock

On our way to the 15th World Orchid Conference in Rio de Janeiro last year, Richard, my husband, and I went to the British Isles. We had just over a month touring around and spent one week with a friend, whom I had not seen since 1950, in Hillsborough, Northern Ireland. All over England and Ireland we were very interested to see houses and shops with flower boxes and hanging baskets full of colorful flowers.

When we drove into Hillsborough we were told the town had come second in the village flower decorations for that area.

While walking the dog one day I spotted some *Phalaenopsis* growing in a window a few houses

from where we were staying. When we told our friend, David, he arranged for Richard and I to visit the grower one evening.

We noticed that most of the houses over there had rather wide window sills and were centrally heated. The *Phalaenopsis* grower had plants on every window sill in the house that had a reasonable amount of light. They were everywhere and growing and flowering well, not to our exhibition standard, but to grow and flower them at all was a major achievement. She had whites, pink, yellow, spots and stripes. At the back of the house the lady had a small glass-house full of different genera, all in good condition, growing and flowering well. The heat source was a small fan heater. Most of her plants came from New Zealand through a commercial nurseryman who visits the Belfast Orchid Club on a regular basis.

Our new found friend turned out to be the Belfast Orchid Club Secretary.

It was a nice surprise where we least expected it.

JUNE MONTHLY FLORAL COMPETITION RESULTS

SECOND DIVISION

Aust.Nat.Epi:Species	<i>Liparis swenssoni</i>	A. & V. Thompson	3
Aust.Nat.Epi:Hybrid	Den. Hilda Poxon 'Debbie'	C. Anderson	3
	Den. Hilda Poxon	A. & V. Thompson	2
	Sarco. Fitzhart x <i>australis</i>	N. Woodend	1
Std. Cymbidium	Bethlehem 'Early Times'	D. Smith	3
	Luana 'Pink Showers'	S. Ng.	2
Inter. Cymbidium	Bethlehem x Pendragon	S. Ng	3
registered name	Choc	M. Baulderstone	2
Mini. Cymbidium	Cherry Cola 'Mayday'	M. Baulderstone	3
	Kauilani 'Karen Anne'	S. Ng	2
	Sarah Jean x Valley Delight	M. Baulderstone	1
Std. Cattleya	Blc. Mahira Yahiro 'Hawaii'	H. Herrmann	3
	Bc. Hope Island	J. Dudley	2
	Blc. Junko Nanko	C. Anderson	1
Nov. Cattleya	C. El Dorado	H. Herrmann	3
	C. Mt Shasta x <i>intermedia</i> 'Aquinii'	A. & V. Thompson	2
Nov. Cluster Cattleya	Blc. Fiesta Girl	J. Dudley	3
	Unknown	G. & M. Voscamp	2
	C. Blue Boy x <i>harrisonii</i>	J. Dudley	1
Std. Paphiopedilum	<i>insigne</i> x Baton 'Valerian'	H. Herrmann	3
	Bingleyense	J. & P. Beasley	2
Nov. Paphiopedilum	Crossianum x Albury	H. Herrmann	3
	Pop Monkhouse x (Myth x Maudiae)	H. Herrmann	2
	Maudiae	H. Herrmann	1
Species Paphiopedilum	<i>insigne</i>	J. Beasley	3
	<i>wardii</i>	H. Herrmann	2
	<i>purpuratum</i>	H. Herrmann	1

Odont/Oncidium Alliance	Onc. Palmyra x Arila	G. & M. Voscamp	3
Species	<i>L. anceps</i>	P. & L. Fenton	3
	<i>Z. mackayii</i>	A. & V. Thompson	2
	<i>L. anceps</i>	C. Anderson	1
Vandaceous	Ratirat x Bangsai Queen	H. Herrmann	3
Zygopetalum Alliance	B.G. White x Artur Elle	W. & R. Clark	3
	<i>mackayii</i> x Titanic	W. & R. Clark	2

FLOWER OF SECOND DIVISION:
Blc. Mahina Yahiro grown by Helmut Herrmann

FIRST DIVISION

Aust. Nat. Epi: Species	<i>Liparis reflexa</i>	D. & J. Higgs	3
Aust. Nat. Epi: Hybrid	Hilda Poxon 'The Strand'	B. Fisher	3
	Ray's Dream	B. Fisher	2
	Berserker x <i>speciosum</i>	B. Fisher	1
Inter. Cymbidium	Summer Pearl	D. & J. Higgs	3
	Cherry Cola	G. & W. Shevlin	2
	Pendragon	G. & W. Shevlin	1
Mini. Cymbidium	Mini Splendour	M. Cunningham	3
Std. Cattleya	Bc. Mt. Hood x C. Horace	D. & J. Higgs	3
	registered name C. Dalaginding	M. Cunningham	2
Nov. Cluster Cattleya	Lc. Mini Purple x Lc. Eva Volkens	L. Gunn	3
Nov. Paphiopedilum	Gael 'Camira'	R. & I. Parish	3
	Gigi x Red Start	R. & I. Parish	2
Species Paphiopedilum	<i>fairianum</i>	R. & I. Parish	3
	<i>spicerianum</i>	R. & I. Parish	2
	<i>purpuratum</i>	R. & I. Parish	1
Species	<i>Onc. ornithoryncham</i> x self	R. & I. Parish	3
	<i>Enc. dichromum</i>	R. & I. Parish	2
	<i>L. gouldiana</i>	R. & I. Parish	1
Zygopetalum	Kiwi Choice	D. & J. Higgs	3
	<i>perrenoudii</i> x Helen Ku	B. Fisher	2
	Kiwi Choice	B. Fisher	1

FLOWER OF FIRST DIVISION:
Paphiopedilum Gael 'Camira' grown by Ron & Irene Parish

OPEN DIVISION

Aust.Nat.Epi:Hybrid	Den Hilda Poxon	D. Biebrick	3
	Den. Hilda Poxon	P. & G. Flavel	2
	Den. Aussie Child	R.& B.Anderson	1
Aust.Nat.Terr:Species	<i>Acianthus pusillus</i>	M. Tiggeman	3
	<i>Ptst. ophioglossa</i>	M. Tiggeman	2
	<i>Ptst. robusta</i>	D. Biebrick	1
Aust.Nat. Terr:Hybrid	Ptst. Toveyana	R.& B.Anderson	3
	Ptst. Toveyana	D. Biebrick	2
	Ptst. Rogoff	D. Biebrick	1
Std. Cymbidium	Tracy Reddaway	M. Bray	3
	Tracy Reddaway	G. Speer	2
Inter. Cymbidium	Bethlehem x Pendragon	G. Speer	3
	Mini Dream x Peter Pan	H. Gerber	2
	Hove x Peter Pan	M. Tiggeman	1
Mini. Cymbidium	Karoonda	K. Northcote	3
	Kauilani	H. Gerber	2
	Kauilani	H. Gerber	1
Std. Cattleya	Blc. Erin Kobayashi	C.& H. Edwards	3
	Blc. Mem. Crispin Rosales x Blc. Lucky Strike	R. & B. Wilson	2
	Lc. Rosemary Haydon	C.& H. Edwards	1
Cluster Cattleya	C. Portia 'Monty'	K. Northcote	3
	Lc. Molly Tyler	K. Northcote	2
Nov. Cattleya	Lc. Sunset Sky	C.& H. Edwards	3
	Blc. Hawaiian Thanksgiving	C.& H. Edwards	2
Cocktail Catteya	Slc. Hazel Boyd	R. & B. Wilson	3
	C. Puppy Love	R.& B.Anderson	2
	Bc. Rose Pixie	C.& H. Edwards	1
Miscellaneous	Epi. Lavender Lady	D. Biebrick	3
Std. Paphiopedilum	Redstart x W.N.Evans	D. Biebrick	3
Nov. Paphiopedilum	<i>venustum</i> x <i>insigne</i>	D. Biebrick	3
	<i>fairieanum</i> x Enchantress	D. Biebrick	2
	<i>insigne</i> x <i>sukhakulii</i>	D. Biebrick	1
Species Paphiopedilum	<i>spicerianum</i>	D. Biebrick	3
	<i>insigne</i>	D. Biebrick	2
	<i>insigne</i>	D. Biebrick	1
Odont/Onc Alliance	Howeara Mini Primi	P. & G. Flavel	3
	Bllra. Tohama Glacier	C.& H. Edwards	2
	Onc. Milky Way	M. Tiggeman	1
Species	<i>Z. mackayii</i>	K. Northcote	3
Vandaceous	Ascda. Caroline	R.& B.Anderson	3
Zygopetalum	Zga. Dynamo Spots	P.& G. Flavel	3
	Z. Artur Elle	P.& G. Flavel	2

FLOWER OF THE DIVISION:

***Slc. Hazel Boyd* grown by Richard & Beryl Wilson**