



*August 2006*

The  
South  
Coast  
Orchid  
Club  
Inc.  
Gazette

Patron  
Sydney Monkhouse

ABN 83 245 384 076

**PRESIDENT    TREASURER    SECRETARY**

Geoff. Spear

Judy  
McRedmond

Lucy Spear  
Box 314  
OAKLANDS PK  
83814420

82933545

**AT A GLANCE**

**THE NEXT MEETING OF THE SOUTH COAST ORCHID CLUB** will be held at 8pm on Wednesday, 2nd August 2006, at St Bernadettes Church Hall, St Marys. Guest Speaker - Joe Quarmby  
Subject - Native Orchids, Conservation, and Field Trips

**DAYTIME GROUP** to be held at South Brighton Community Hall, Dover Square, South Brighton, on Thursday 10th August 2006, at 2pm.  
Guest Speaker - Don Nesbit Subject - ONCIDIUMS

**SPECIES GROUP** on Monday, 21st August 2006, at 8pm, Dover Square, off Broadway, South Brighton.

**SOUTHERN REGIONAL GROUP** on Sunday 20 August 2006, at Carrickalinga House 17 - 19 Torrens St, Victor Harbor, at 2pm. Guest Speaker - Graham Zerbe Subject - Conference at Pt Macquarie.

**Southern Regional Group Show** on Thursday, 17 August to Sunday, 20th August.

**CYMBIDIUM GROUP** on Tuesday 8 August at 8pm Dover Square, off Broadway, South Brighton. Discussion will be by way of a video from Graham Zerbe showing the progression from Cym. Species to modern hybrids

**RAFFLE PLANTS** Thank you to Geoff Spear for July's plants This month Thanks go to Graham Morris

**SPRING SHOW**

See page 4

**DISPLAY AT HILTON**

19 to 21 October More Information to follow

PLEASE [http://members.optusnet.com.au/~vcs\\_filming/](http://members.optusnet.com.au/~vcs_filming/)  
Check it out to see all the updates gazettes & pictures.

**Have an opinion or something to say**  
contact the Editor Ron Parish Ph 08 8298 4118

**E-mail [vcs\\_filming@optusnet.com.au](mailto:vcs_filming@optusnet.com.au)**

**People who submit articles to the Club for inclusion in our Gazette express opinions which are not necessarily those of the Club. No Guarantee is provided to anyone using the ideas & opinions expressed in these articles.**

**Items must be delivered to the Editor by the Thursday following the Committee meeting.**

**PUBLIC LIABILITY**

**Under insurance guideline all members and Committee attending any function or meeting held by the Club must now sign an attendance book by name and signature.**

**JUDGING ROSTER FOR AUGUST MEETING**

**Leader** - B Bower

**Open Division**- R Shooter G Zerbe Pencillor - G Flavel

**First Division** - H Fishlock I Attenborough Pencillor - Wendy Lodge Observer - C Campbell

**Second Division** - N Oliver R Fishlock Pencillor - P Flavel

**Computer** - B Gay

**Hostess** - Irene Parish and Vanessa Talbot

**LAPTOP AND DATA PROJECTOR**

We all need a pat on the back for our savings campaign to buy the Club a lap-top computer and data projector.

By the end of the Winter Show we had saved enough to buy these two items and this now makes the Club independent and well stocked to go into the future with record keeping and projection facilities

**2006 CLUB MEETING DATES**

**September**

6 Main G Morris

12 Cymbidium Appreciation

14 Daytime Group

17 Southern Group

18 Species Group

**October**

4 Main Graham Zerbe on Pt MacQuarie Orchid Conference

10 Cymbidium Appreciation

12 Daytime Group

15 Southern Group

16 Species Group

**November**

1 Main John Harris re Milo Bali Orchids

14 Cym Appreciation Group

16 Daytime Chapter

19 Southern Regional Group

20 Species Group

**December**

6 Main Christmas Surprise

14 Daytime Chapter

17 Southern Regional Group

**2007**

**February**

4 Species Group B-B-que

7 Main AGM

8 Cym Appreciation Group

15 Daytime Chapter

18 Southern Regional Group

19 Species Group

**March**

7 Main

13 Cym Appreciation Group

15 Daytime Chapter

18 Southern Regional Group

19 Species Group

### **PRESIDENT'S MESSAGE.**

Congratulations to Hugh Grind for his Onc. (Mire x Nowawya X Eureka). This was Hugh's first Grand Champion, and how grand it looked in the display. It certainly was a Dancing Lady.

Thankyou to everyone involved in setting up Kurralta Pk. I have only heard excellent comments about how nice the display looked. At this stage it seems we have a number of people interested in visiting our Club, 2 new members, and great sales.

I have noticed very few members put their name in the roster book for Club Trading Tables. This does make it difficult for Committee. One morning 9 members arrived not listed for duty, then on the busiest day of all, only 2 Committee members were rostered all day. This can be very tiring and not so secure for our display and Trading Table

Dorothy will have her book all ruled up for the September Show at Arndale. Maybe we can all organize our time and pop 3 hours down to help - it is a lot of fun

Thirty years of growing orchids and I have never found them to be so late coming out. Think positively - what a great Spring Show we will have down at Arndale - they must be out by then.

Handy hints - being so cold and dry this year, pots dry out very quickly especially spiked orchids. Please make sure you keep the water up to them and don't let them dry out.

A get well wish to all our members on the sick list - hope to see you back at the meetings soon.

Good Growing, Kind regards,  
Geoff

### **CYMBIDIUM APPRECIATION GROUP**

CRONULLA 'The KHAN' was the main topic. Members were asked about the seedling they were given earlier in the year. Most are doing well.

Next month,

Graham Zerbe will show a tape on Australian Cym. Hybrids and a few Cym. Species Orchids. Also, John van Dulken will bring his player so you can all see Flora Holland. This item runs for about 10 mins. It is very interesting. Members please bring along a flowering plant you may have. We can then put a display up on a back table so we can all appreciate them. See you all on the second Tuesday in August.

### **SOUTHERN REGIONAL GROUP**

Our July Meeting Guest Speaker was meant to be Trevor Garard. At the last moment Trevor was very ill with a virus. Hope you are feeling much better. Noel kindly offered to talk on terrestrials and other genera. Thank you Noel for a great talk.

Please try and keep 4th August free, at 10.30 am, at Elsie and Reg Clifford's (phone no 085524408) to help you all get your orchids ready for your show on the 17th August.

August is such an exciting time for you all. I wonder who's orchid will be judged Best Orchid of the Show?

Please remember you should have owned your orchids for at least 6 months prior to the show

Next months Speaker - Graham Zerbe. Graham and Sue who attended the Orchid Conference at Pt Macquarie, and you will be the first members to see this tape as Graham will have only been back in Adelaide a few days.

## DAYTIME GROUP

Hi Everyone, Well, what a great afternoon meeting we had today. A lovely group of members were totally entertained by our Guest Speaker, Mr Geoff Spear. Geoff being a totally dedicated Cymbidium grower was certainly on a roll this afternoon. He was so full of knowledge and was prepared to share all this with us. He gave an excellent talk on potting and dividing a Cymbidium and he showed us all how to prepare a plant for Shows and Judging, cleaning up the plant, staking and presentation - the whole package. All the Members were truly captivated and I'm quite sure we all learnt something. Thanks Geoff for a great presentation. It was also a great day for another reason, we were celebrating the 90th Birthday of one of our Members, Mrs Eva Soar, a long time Member of our club, a lovely lady, who is still recovering from a broken hip. She's getting around OK. She is a very determined lady as well. Happy Birthday, Eva. It's great to have you around, and she does admit she's a bit of a stirrer and has a great sense of humour. Apologies were put in for Don and Audrey Biebrick who were on holidays - lucky ducks. Audrey has just rung up and they're back early. She says that Don is a bit disappointed it was so cold and he couldn't go fishing. Never mind Don, there will be other days. Mr Ralph Lucas, another fairly new Member to our Club, had a very successful day at our Winter Show picking up three Certificates for his Paph. Insigne. Congratulations, Ralph on a job well done, it was a lovely plant, you must be doing something right.

Margaret Wagner and Bill Clark's Cymbidiums were judged equal best in our popular vote segment this afternoon. Margaret's Cym "Mint Ice", a lovely green, pure colour and Bill's Cym "Willamurra Jupiter", a lovely plant with brown red flowers. Congratulations and well done to you both. The Meeting was closed, and then we cut Eva's cake and sang Happy Birthday twice, once for Eva and then for our club as it was the Club's 41st Birthday as well this month. Then we tucked into the cake and other goodies and a cuppa. Bye Dorothy



**PUT THESE DATES IN YOUR DIARY.** Southern Regional Group - preparing for your show on Friday, 4th August, time - 10.30.

E and R Clifford, 46 Lamont Rd, McCracken. Phone 552 4408.

**BUS TRIP** . We still have seats available for 12 more members and the good news is plenty of room for you to buy plants. The bus will leave from South Brighton Community Hall, Broadway, South Brighton at 9.00am sharp on Sunday 13th August 2006, arriving at Bev and John Gay's, 2 Prosperity Grove, Murray Bridge, at approx 10.15 am. Then to Tom Burian, Lot 25 Heinjus Rd, Strathalbyn, at 12 - 12.30pm for BBQ lunch. Both nurseries will have plants for sale. Please bring a salad, cake or nibbles. A monster raffle has been planned. Please pay Treasurer at Main Meeting, \$20.00 per head.

Members who are going by car my mobile No is 040964 2352, - you may need direction.

**VICTOR HARBOR SHOW** 17th to 20th August, at Sea Scouts Hall, corner Pine Ave and Hindmarsh Rd, Victor Harbor. Time - 10.30 to 4.30pm.

**ROYAL SHOW** - OCSA SPRING SHOW times and venue for our Display TBA. September 1st to 9th.

**SOUTH COAST SPRING SHOW** at Centro Arndale.

Judging on Saturday 16 September at 1.30 for 2.pm start, Hamilton School, Marion Rd. Put in Show in front of Harris Scarfes, on Sunday, 17th September. To take out, 23rd September. Times - TBA.

**MURRAY BRIDGE SHOW** - 15th, 16th and 17th September, at Town Hall Murray Bridge. Friday noon to 5pm. Saturday and Sunday, 10am to 4pm.

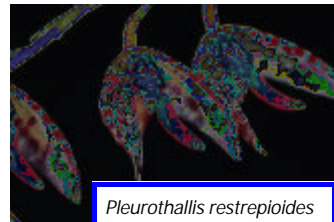
**CONGRATULATIONS** to -

Hugh Grund - Grand Champion Winter Show  
Bridgett Robinson and Heather Engelhard - Bark Raffle  
Russell and Eda - Highest bidder for the painting donated by Shirley and Sid Monkhouse  
THANKYOU to Anne and Phil Steer for donating an orchid painting to the Club. It will be raffled at a later date.

**COMMITTEE IS CONTEMPLATING** visits to various members homes to see the set up of their plant house, etc - not your actual plants. Many members are interested in your actual set up with sprinkler system, fertilizer, hot house, type of shade cloth etc. Members who maybe interested please ring Lucy on 8381 4420 and she'll arrange an appropriate time for visits, we expect will be on the Sunday, 5 November. Rito Silvestri has invited us to his home at Rostrevor. He has a very interesting garden with palms, cycads, etc and of course Rito has orchids. We could finish our plant house tour at Rostrevor.

**SPECIES GROUP**

Due to number of members attending AOC Conference and sickness only 10 members attended on Monday night 17th July. In spite of the few numbers an interesting meeting ensued. Winter is the time when many of the pleurothallids bloom and the bench carried several for us to enjoy. Many of the species have quite small flowers but *Pleurothallis restrepioides* has long 30cm racemes of dark red flowers along the length of the raceme. closely related to Pleurothallis is the genus Restrepia, species from this genus produce their flowers from the base of the leaf often sitting on the leaf. Two species were benched *Restrepia sanguinea* endemic to Columbia and as the name suggests is a brilliant red colour. Similar in appearance the other species shown was *Restrepia trichoglossa* also from Columbia but with a much wider range into Mexico, Guatemala & Peru basically yellow cream with magenta striping looking like an insect waiting to pounce. A much larger orchid exhibited was the sweet smelling *Cymbidium tracyanum* carrying several arching spikes of 10 to 20 greenish brown flowers with dark red stripes and spots.



*Pleurothallis restrepioides*



*Restrepia sanguinea*



*Paphiopedilum villosum*

An easy orchid to grow and flower producing blooms from spring through to winter.

A nice plant of *Paphiopedilum villosum* with two highly polished shiny flowers was also benched. This is a cool growing reliable flowering paph that should be in everyone's collection just requiring plenty of watering when in growth and kept on the dry side in the cooler months but providing ample air movement at all seasons.

Reg Shooter

**Welcome & Congratulations to**

**NEW MEMBERS**

Leon Haynes , Loren Arnold, Dianne Wood, Neville Bowron



## WINTER SHOW CHAMPIONS LIST

### Grand Champion

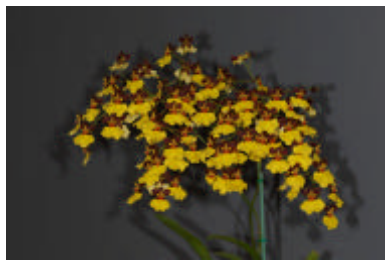
- 334 Onc. [(Mirra x Nonanya) x Eureka] Hugh Grund (251)  
**Champion Open Division**
- 331 Onc. [(Mirra x Nonamyra) x Eureka] Hugh Grund (251)  
**Champion Cymbidium 60 - 90mm**
- 320 Cym. Without Peer 'Soft Touch' Ron & Irene Parish (477)  
**Champion Dendrobium (other than Aust Native)**
- 322 Den. (Victoria Jupp x racemosum) Noel Oliver (102)  
**Champion Laeliinae**
- 323 Lc. Adelaide Ablaze 'Sunburst' Peter & Geraldine Flavel (487)  
**Champion Zygopetalum**
- 326 Zga. Adelaide Parklands Noel Oliver (102)  
**Champion Genera not otherwise listed**
- 327 Pleurothallis rowleii Ron & Irene Parish (477)  
**Champion Species**
- 328 Paph. insigne Helmuth Gerber (42)  
**Champion Seedling**
- 329 Blc. Dream Trader x Lc. Drumbeat Richard & Beryl Wilson (321)  
**Champion Specimen**
- 330 Lc. Adelaide Ablaze 'Sunbust' Peter & Geraldine Flavel (487)  
**Champion Oncidiinae**
- 324 Onc. [(mirra x noamyre) x Eureka] Hugh Grund (251)  
**Champion Paphiopedilum**
- 325 Paph. insigne Helmuth Gerber (42)  
**Les Nesbit Trophy Award (Species)**
- 335 Ptst. collina Malcolm Guy (248)  
**Champion First Division**
- 332 Den. Ruth Wurth David & Kay Cammack (1535)  
**Champion Cymbidium < 60mm**
- 319 Cym. (Dolores Hoyt x Tom Thumb 'Tamara' John Robinson (1448)  
**Champion Australian Native**
- 318 Den. Ruth Wurth David & Kay Cammack (1535)  
**Reg Shooter Trophy Award (Hybrids)**
- 336 Den. Ruth Wurth David & Kay Cammack (1535)  
Ref.  
**Champion Second Division**
- 333 Paph. insigne Ralph & Heather Lucas (586)

### Winter Show Plant Commentary

Although the number of plants was not really large there was good quality and the display at K-Mart Centro on Anzac Highway was well received and generated a lot of interest. Congratulations to all



who showed their plants.



**Grand Champion, Champion Open Division and Champion Oncidiinae:**

*Onc.* [(Mirra x Nanamyra) x Eureka]. A very nice plant carrying two branched inflorescences with a total of over 100 well displayed flowers. Sepals and petals were deep chocolate brown with fine pale yellow markings and a fine yellow line around the frilled edges of the petals. The labellum was marked brown at its base with a large yellow mid-lobe.

**Champion 1<sup>st</sup> Division, Champion Australian Native:** *Den.* Ruth Worth, carrying two spikes, one in bud, the other with four open flowers. The pale yellow sepals and petals were pinkish-purple at their base and the side-lobes of the white labellum were blushed with light purple-pink.



**Champion 2<sup>nd</sup> Division:** *Paph. insigne*, a plant with 12 stems carrying a single flower each. The well displayed flowers were typical for the species with their green dorsal edged white at the periphery and spotted with brown, light brown petals and labellum.

**Champion Cym <60mm:** *Cym.* Dolores Hoyt x Tom Thumb. There were two inflorescences of flowers with apple green sepals and petal complimented by a white labellum marked deep red around the edge of the centre lobe.

**Champion Cym 60 – 90mm:** *Cym.* Without Peer 'Soft Touch'. This plant bore two inflorescences carrying attractive flowers with pale pink sepals and petals, a white labellum shaded pale pink around the lightly frilled mid-lobe and complimented by a pale yellow pollen cap and calyx.

**Champion Cym >90mm:** *Cym.* Valley Chestnut 'Warrior'. A large plant carrying five inflorescences. The sepals and petals were a yellowish-green base overlaid with red-brown linear spotting. The yellow labellum was marked solid red near the outer edge with red spotting further in towards its base.

**Champion Dendrobium(other than Aust Native):** *Den.* (Victoria Jupp x *racemosum*). This plant carried ten inflorescences with 10 to 15 flowers each. The sepals and petals were white very finely spotted with pale pink and the white labellum had fewer, but larger, red spots and fine red striping.

**Champion Laeliinae:** *Lc.* Adelaide Ablaze 'Sunburst'. A cluster Cattleya with four inflorescences. The flowers had orange sepals and petals shading to yellow at their base and the labellum was yellow at its base with a deep red central lobe.

**Champion Zygopetalum:** *Z.* Adelaide Parklands. A plant with five inflorescences, some with buds still to open. The sepals and petals were green with attractive brown markings and the white labellums shaded to pale purple at their outer edges and had deep purple striping.

**Champion, genera not otherwise listed:** *Pleurothallis rowleei*. A Central American species needing high humidity, the plant carried two inflorescences of eight small flowers each. On one the flowers were fully open and those on the other were still to come out. The tiny flowers were deep maroon.

**Champion Seedling:** *Blc.* Dream Trader x *Lc.* Drumbeat. A single very large shapely flower with bright pink sepals, frilled edge petals of the same colour and a deeper pink labellum with a deep purple-pink patch on the central one third. A plant with potential.

**Ian Attenborough**

## **MONTHLY FLORAL COMPETITION**

### **Open Division**

#### **Australian native epiphyte hybrid**

309	Den. Hilda Poxon 'Ern'	Bev & John Gay (65)	3
310	Den. Bellinger River	Peter & Geraldine Flavel (487)	2

#### **Cymbidium < 60mm (all colours)**

303	Cym. Memoria Robert Lord	Bev & John Gay (65)	3
-----	--------------------------	---------------------	---

#### **Cymbidium > 90mm (all colours)**

307	Cym. Valley Legend 'Gee Whiz'	Bev & John Gay (65)	3
308	Cym. Temple Court	Bev & John Gay (65)	2

#### **Cymbidium 60 - 90 mm (all colours)**

304	Cym. Choc	Bev & John Gay (65)	3
305	Cym. Kakadu 'Peach'	Ron & Irene Parish (477)	2
306	Cym. Enzan Summer	Russell & Edda Job & Viskic (70)	1

#### **Dendrobium (not Aust native) species**

348	Den. Doreen x Anouk x Sagarit	Tony & Toshie Deionno & Martindale (24)	3
-----	-------------------------------	---	---

### **349 Laeliinae Non Standard Cluster**

323	Ctna. Brandi 'O.C.'	Bev & John Gay (65)	3
-----	---------------------	---------------------	---

#### **Laeliinae Non Standard Other**

318	Lc. Jungle Elf x L. rupestris	Bev & John Gay (65)	3
-----	-------------------------------	---------------------	---

#### **Laeliinae species**

319	L. anceps 'Irwins'	Gerald Voskamp (1650)	3
-----	--------------------	-----------------------	---

#### **Laeliinae Standard < 100mm**

320	Slc. Sierra Skies 'Leone'	Bev & John Gay (65)	3
-----	---------------------------	---------------------	---

#### **Laeliinae Standard > 100MM**

321	Blc. Mount Sylvan x C. Old Whitey	Richard & Beryl Wilson (321)	3
322	Lc. (Fires of Spring x Sylvia Fry 'Wallacia')	Ron & Irene Parish (477)	2

#### **Oncidiinae hybrid**

328	Onc. Sweet Sugar 'Angel'	Bev & John Gay (65)	3
329	Oncdm. Hansueli Isler '21'	Peter & Geraldine Flavel (487)	2
330	Onc. Sharry Baby	Gerald Voskamp (1650)	1

#### **Oncidiinae species**

326	Onc. ornithorhynchum	Peter & Geraldine Flavel (487)	3
327	Onc. ornithorhynchum	Ron & Irene Parish (477)	2

#### **Orchid Genera not listed elsewhere - species**

331	Pleuro. restrepioides	Ron & Irene Parish (477)	3
-----	-----------------------	--------------------------	---

#### **Paphiopedilum species**

324	Paph. insigne	Bev & John Gay (65)	3
325	Paph. villosum	Gerald Voskamp (1650)	2

### **First Division**

#### **Australian native epiphyte hybrid**

332	Den. Hilda Poxon	Terri Rees (50)	3
333	Den. Jannine Banks	Suzanne Saunders (1481)	2

#### **Cymbidium < 60mm (all colours)**

340	Cym. Prolific	William Clark (407)	3
-----	---------------	---------------------	---

#### **Cymbidium > 90mm (all colours)**

344	Cym. Luana 'Pink Champagne'	Rito Silvestri (302)	3
-----	-----------------------------	----------------------	---

#### **Cymbidium 60 - 90 mm (all colours)**

341	Cym. Morialta 'Morialta Falls'	Rito Silvestri (302)	3
342	Cym. Coonawarra 'Red Rover'	John Robinson (1448)	2
343	Cym. (name unknown)	Terri Rees (50)	1

#### **Laeliinae species**

334	L. anceps var. Chamberlainana	Rito Silvestri (302)	3
-----	-------------------------------	----------------------	---

#### **Laeliinae Standard Cluster**

335	Lc. Angel Heart 'Hihimanu'	Heather Engelhardt (263)	3
-----	----------------------------	--------------------------	---

#### **Oncidiinae hybrid**

336	Onc. Sharry Baby 'Sweet Fragrance'	Terri Rees (50)	3
337	Howeara Many Eliza	Heather Engelhardt (263)	2

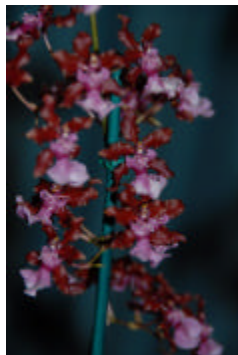


338	Howeara Mini-Primi	Terri Rees (50)	1
<b>Second Division</b>			
<b>Australian native epiphyte hybrid</b>			
315	Den. Wasyf	Tony & Lynn Fisher & Cummings (488)	3
<b>Cymbidium 60 - 90 mm (all colours)</b>			
317	Cym. Barossa Ruby 'Emily Kate'	Wendy Lodge (406)	3
<b>Laeliinae species</b>			
316	L. anceps 'Pink Veitchiana'	Wendy Lodge (406)	3
<b>Orchid Seedling any genera</b>			
311	Paph. (Maudiae x Magic Mood)	Anne & Colin Campbell (479)	3
<b>Paphiopedilum species</b>			
313	Paph. gratrixianum	Anne & Colin Campbell (479)	3
<b>Paphiopedilum Standard</b>			
314	Paph. (Maudiae x Magic Mood)	Anne & Colin Campbell (479)	3
<b>Zygopetalum hybrid (inc. intergenerics)</b>			
312	Z. (name unknown)	Rod & Judy McRedmond (1141)	3

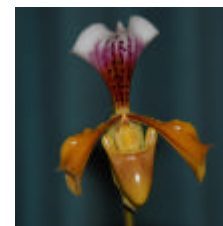
### On the bench July 2006 Monthly Meeting

As would be expected, the number of plants benched because of our Winter Show at K-Mart at Centro, Kurralt Park for the whole week that this meeting was held. There were, however, some very nice plants and worthy winners on the night.

**Flower of Open Division and Flower of the Night:** *Den.* Hilda Poxon 'Ern' benched by Bev. and John Gay. This was a large, well-grown floriferous carrying twelve inflorescences. The numerous flowers were large with clear yellow sepals and petals and pale cream labellums which were spotted and striped along each side, intensifying towards the base.



**Flower of First Division:** *Onc.* Sharry Baby 'Sweet Fragrance' grown by Terri Rees. A well-grown plant with two backbulbs, 5 bulbs carrying one or more leaves and two inflorescences. The inflorescences were branched and carried some 61 and 52 flowers. Sepals and petals were deep mahogany red, the labellums were purplish red towards their base shading to lavender and/or white towards the outer edges. The lavender on the edge replacing the usual white on the labellum probably results from the unusually cold temperatures experienced during this flowering season.



**Flower of Second Division:** *Paph. gratrixianum* grown by Anne and Colin Campbell. The parents of this plant were selected varieties of the species *Paph. gratrixianum* ('Fine Spots' x Geyserland'). It was a well grown plant with one flower. The dorsal sepal was creamish white with purplish-red stripes and deep maroon spots, the green ventral sepal had some fine red spotting. The petals were medium brown with a fine deep maroon stripe along their mid-line and the labellum was a similar shade of brown.

**Ian Attenborough**

### For Sale

Approx 3 trailer loads of 3/8 blue metal  
 Lengths of 20mm Galv. Water pipe  
 400 x 25 Galv Mesh  
 Assorted Downee Clamps  
 Phone Graham Harvey 83811573

## Current Sponsors for our Club

We wish to thank the following persons who have supported us and our shows with donations etc. Members are requested to keep these people in mind when purchasing orchids and supplies

Coast FM          David Cammack          Geoff & Lucy Spear          Gordon Brooks  
Helmut Hermann    Jim Shaughnessy    John & Bev Gay    John & Sandra Nicholls  
Moss & Rosemary Bray ( Sims Orchids)          Munns Garden Centre Glandore  
Murray Baulderstone    Noel Oliver    Peter Klose    Richard & Heather Fishlock  
Ron & Irene Parish    Smoults Horticultural supplies    Spirit Australia Cruises  
Ted & Marjorie Chance          Valley Orchids    Flagstaff Hotel

### MILES HARPER

HARPER DAVISON - FOR LEGAL ADVICE  
INCLUDING WILLS AND ESTATES  
1<sup>st</sup> free interview for South Coast Orchid Club  
Members  
Phone 8271 0194  
Email - miles@harperdavison.com.au

### Lyttle Orchid Clones

5, Swifte Court Aberfoyle Park SA 5159  
Zygopetalum seedlings in Flask  
Small Flask \$20 Large Flask \$30  
Phone (08) 83818618 Fax ( 08) 8322 7887  
Email: admin@lyttleorchidclones.com.au  
www.lyttleorchidclones.com.au

### Valley Orchids

Lot 8 Wheaton Rd McLaren Vale  
Postal Address P O Box 143 McLaren Vale  
S.A. 5171 Phone 83273955  
Flowering Season New releases  
and seedlings  
Open by appointment

### Munns Garden Centre Glandore

Will give South Coast members 10% off on all  
Campbells fertilizers

### South Coast Orchid Club of South Australia Inc

**MARKET SPOT**  
Orchids Australia Magazines \$6.50  
Club Badges \$6.50

### Tom Burian Orchids

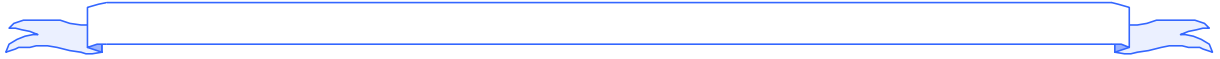
Lot 25 Heinjus Road, Strathalbyn 5255  
Phone 0412 391 989  
Open Weekends all year around.

### NOEL D OLIVER

Australian Native Orchids  
Dendrobium & Sarcochilus  
Species, Microclines, Seedlings  
Also Orchid Bark (4 grades)  
Available all year  
**Phone 0884434945 Mobile 0418854034**

### WESTERN ORCHIDS / LABORATORIES ORCHID TISSUE CULTURE MEDIA, LABORATORY SERVICE CLONING & SOWING

Flasks of Aust. Den. & Aust. Cym. species and hybrids.  
Commercial Cym. Pot-plant, Cut-flower & Showbench  
seedlings & Clones. Select quality, mini Cat. alliance  
clones. Misc. species. Sarco's . Disas -  
**Kevin & Helen Western. Ph/Fax 08 8270 4599**  
Email western@arcom.com.au



**AFFILIATED CLUBS**  
Murray Bridge and Districts Orchid Clubs  
Orchid Club of South Australia



---



If unclaimed please return to  
P.O. box 314 Oaklands Park S.A. 5046

---